

Technical drawing of a rectangular frame assembly, showing dimensions and part numbers. The drawing includes a top view and a side view.

Top View Dimensions:

- Overall width: 3.96
- Overall height: 3.00
- Inner width: 2.40
- Inner height: 0.66
- Corner radius: 0.30

Side View Dimensions:

- Overall width: 3.96
- Overall height: 2.55
- Inner width: 2.10
- Inner height: 0.30
- Corner radius: 0.30

Part Numbers and Labels:

- TR-80/30x80/25 (Top and Bottom rails)
- TR-80/30x80/25 (Left and Right rails)
- 30x30 (Corner brackets)

Assembly Details:

- The frame is composed of four main rails and four corner brackets.
- The top and bottom rails are labeled TR-80/30x80/25.
- The left and right rails are labeled TR-80/30x80/25.
- The corner brackets are labeled 30x30.
- The assembly is shown with dimensions for overall size, inner size, and corner radius.

Technical drawing of a reinforced concrete slab (slab) showing dimensions, reinforcement details, and structural analysis results.

Dimensions (m):

- Overall width: 3.96
- Overall height: 3.00
- Internal width: 2.40
- Internal height: 2.40
- Corner dimensions: 0.30, 0.30, 0.30, 0.30
- Internal width (bottom): 3.96
- Internal height (bottom): 3.00
- Internal width (left): 2.47
- Internal height (left): 2.47
- Internal width (right): 2.10
- Internal height (right): 2.10
- Internal width (bottom): 2.55
- Internal height (bottom): 2.10
- Internal width (left): 4.33
- Internal height (left): 3.88
- Internal width (right): 9.66
- Internal height (right): 4.33
- Internal width (bottom): 9.66
- Internal height (bottom): 4.33

Reinforcement Details:

- Bar diameter: ø8/30
- Spacing: 16/10
- Length: L=98, L=115, L=94
- Support reactions: R=15
- Moments: M=50, M=97.30

Structural Analysis Results:

- Momento di servizio (SLL) = 55.50 kNm
- Momento di servizio (SLL) = 97.30 Nm
- Momento di servizio (SLL) = 41.00 kNm

Labels:

- 1, 2, 3, 4: Quadrants
- 5: Central square area
- 6, 7, 8, 9: Corners

Technical drawing of a roof truss structure, showing dimensions and labels for various components.

Dimensions (mm):

- Top horizontal dimensions: 3.66, 0.96, 1.24, 1.46, 0.96, 1.24, 1.46.
- Left vertical dimensions: 1.34, 1.34, 1.44, 1.55, 1.95, 9.36, 2.92, 1.72.
- Right vertical dimensions: 1.34, 2.98, 0.41, 2.92, 1.72.
- Bottom horizontal dimensions: 1.84, 1.84, 3.66, 1.82, 1.82.

Labels and Components:

- 1:** Diagonal member (top left).
- 2:** Diagonal member (bottom right).
- 3:** Vertical member (left).
- 4:** Vertical member (right).
- 5:** Horizontal member (top).
- 6:** Horizontal member (bottom).
- 1a:** Diagonal member (top left).
- 2a:** Diagonal member (bottom right).
- 3a:** Vertical member (left).
- 4a:** Vertical member (right).
- 5a:** Horizontal member (top).
- 6a:** Horizontal member (bottom).

Structural Details:

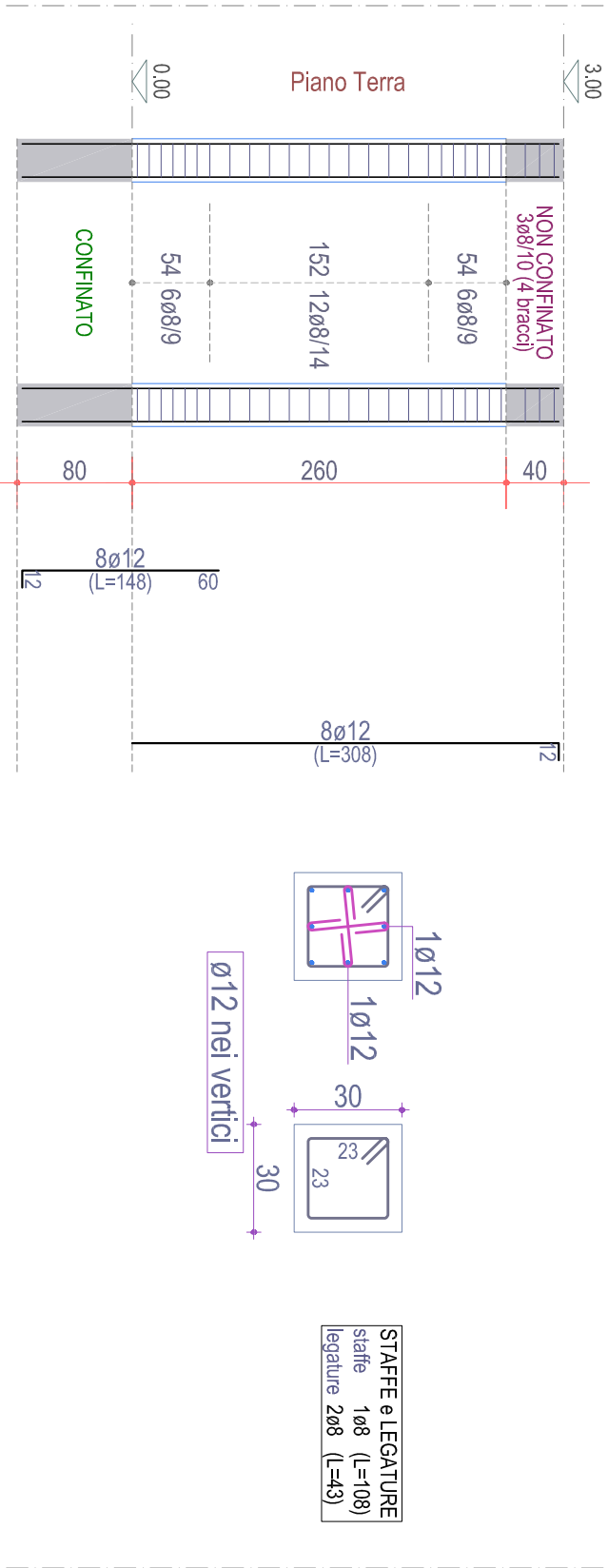
- Members are labeled with dimensions: 30x40, 16x36(L), 16x36(R), 16x36, 16x36(L), 16x36(R).
- Connections are labeled with dimensions: 30x40, 16x36(L), 16x36(R), 16x36, 16x36(L), 16x36(R).
- Members are labeled with dimensions: 30x40, 16x36(L), 16x36(R), 16x36, 16x36(L), 16x36(R).

[illegible]

Technical drawing of a double-arched bridge structure. The drawing shows two arches with a central span of 21.0m and side spans of 3.0m each. The total length is 27.0m. The height of the arches is 1.5m. The drawing includes dimensions for the arches (1.5m, 1.5m), the central span (21.0m), and the side spans (3.0m). It also shows the total length (27.0m) and the height of the arches (1.5m). The drawing is labeled with '1' and '2' in circles, indicating different views or sections.

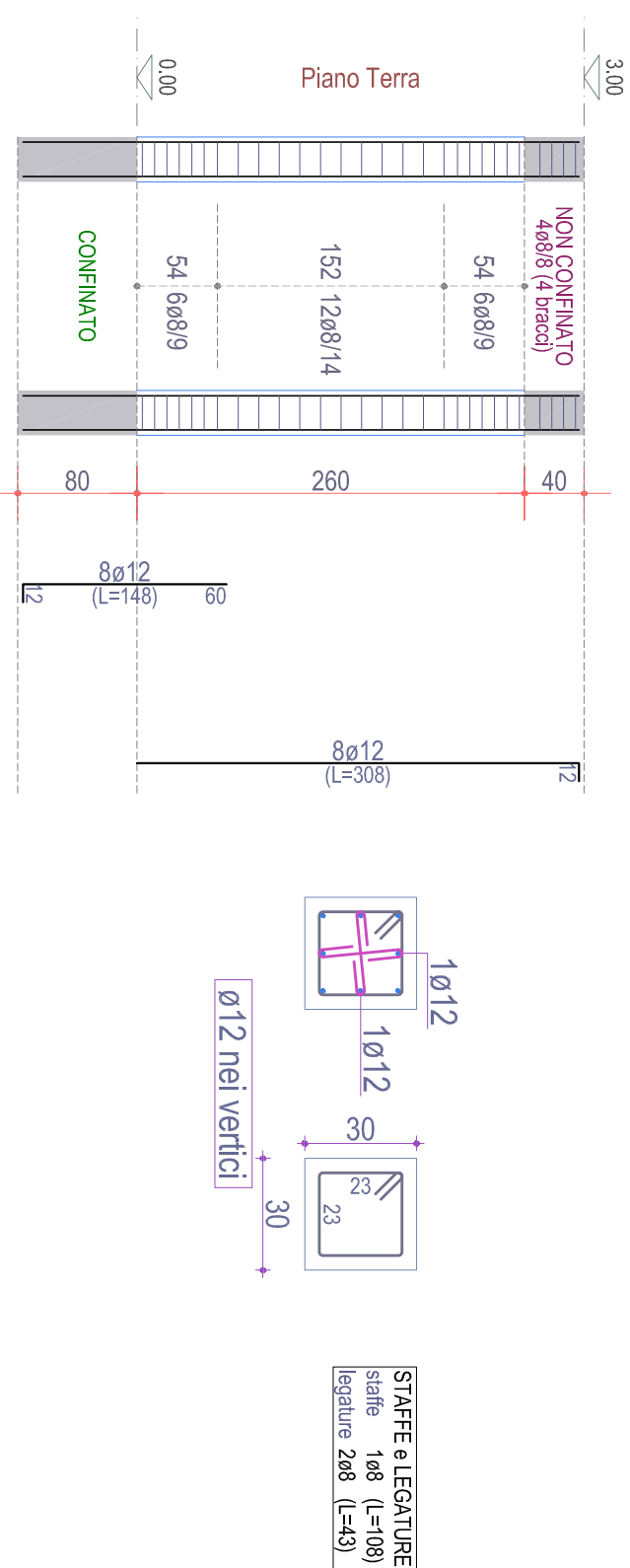
PROGETTO
--
SERIE
STR
NUMERO
6.1.1
RAPP.
1:50

PILASTRATA 6



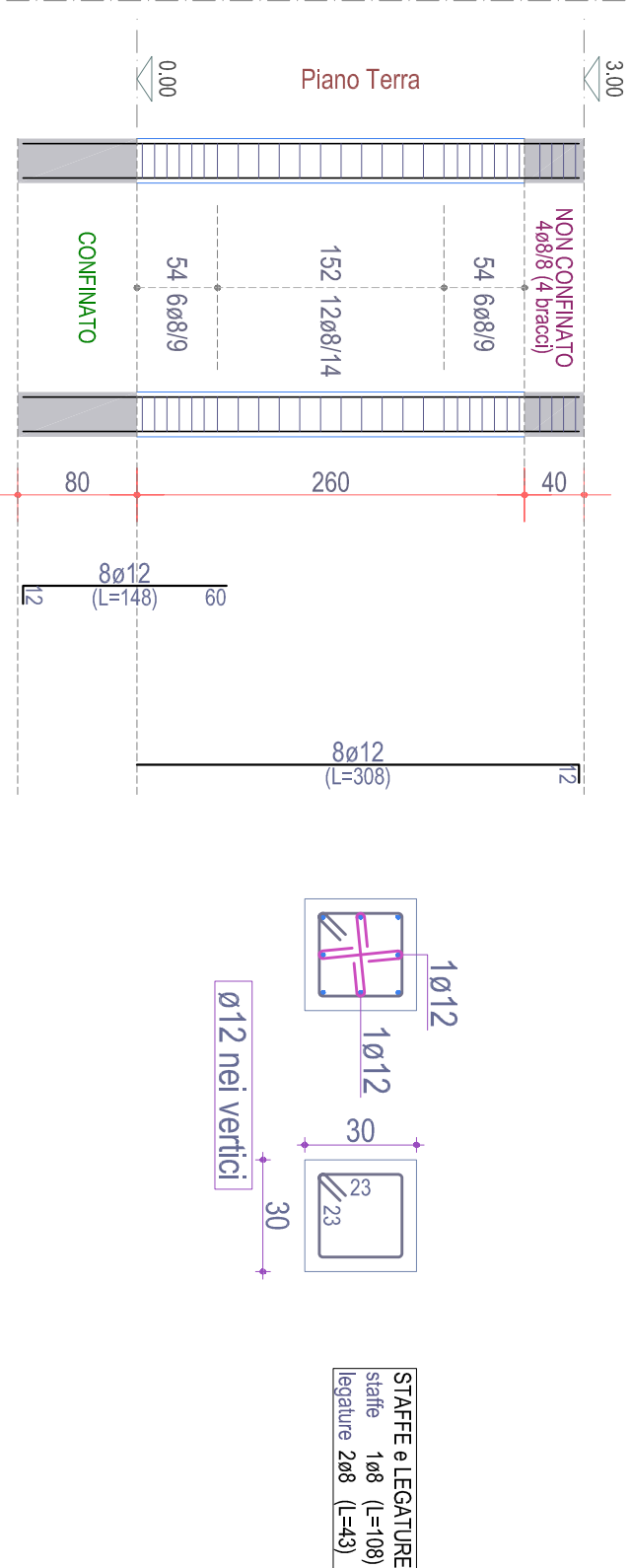
Scala: 1/50

PILASTRATA 7



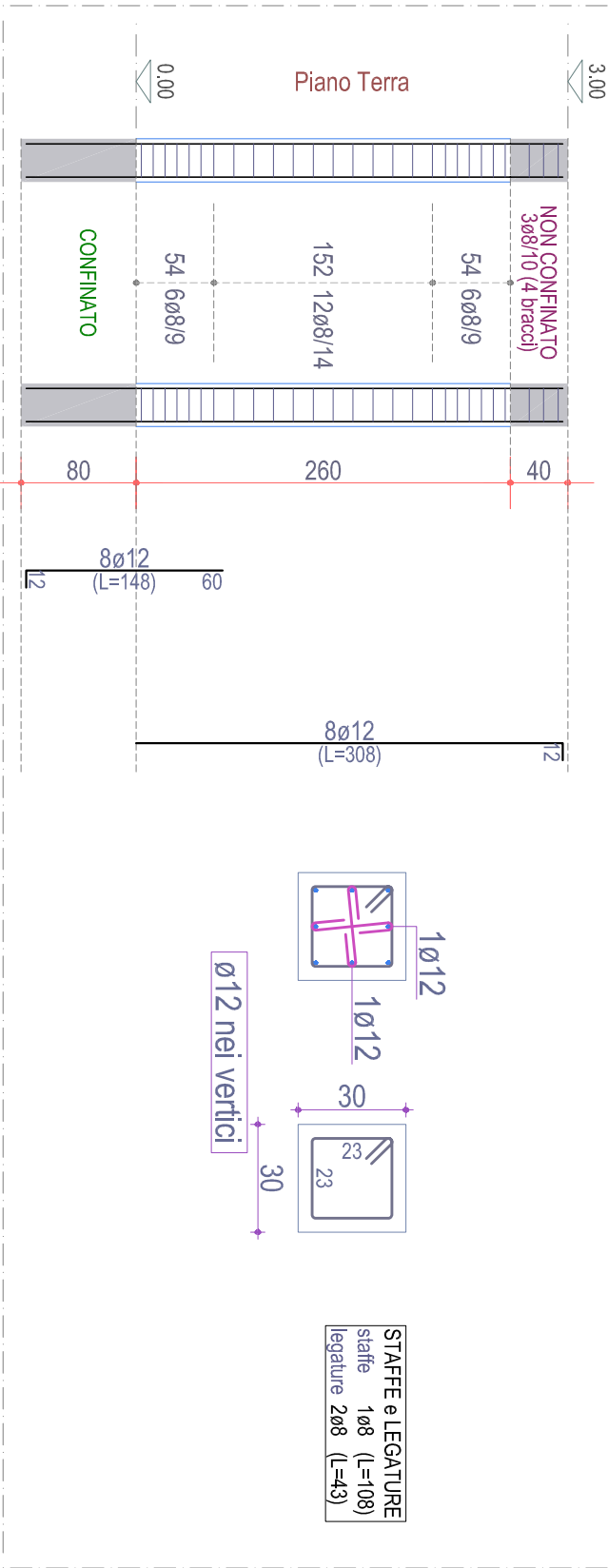
Scala: 1/50

PILASTRATA 8



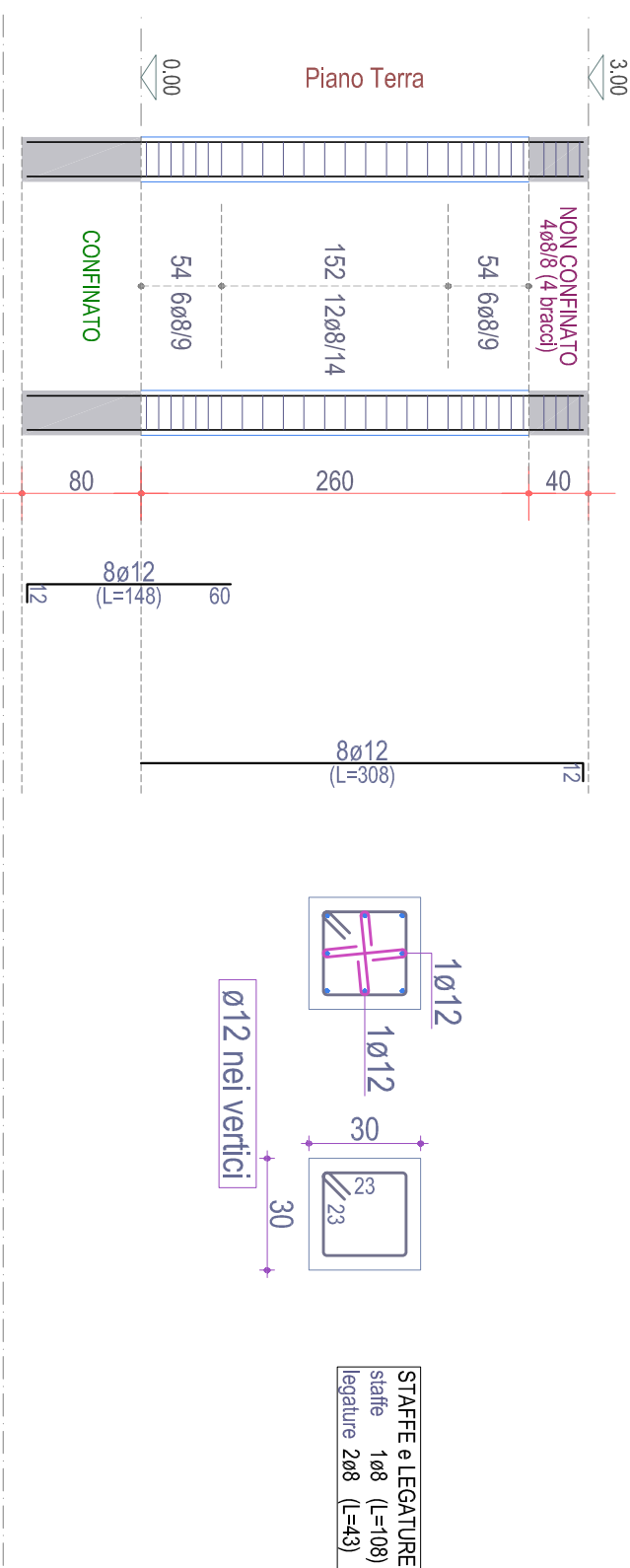
Scala: 1/50

PILASTRATA 1



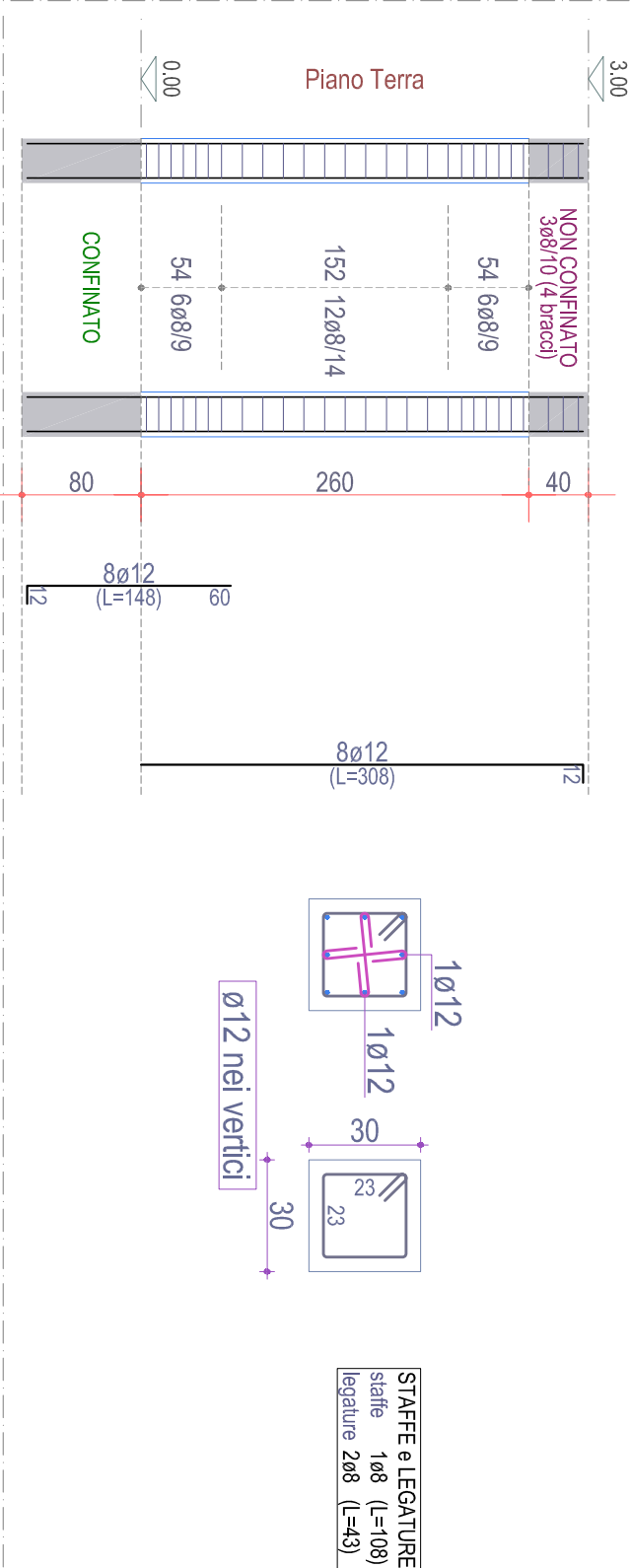
Scala: 1/50

PILASTRATA 2



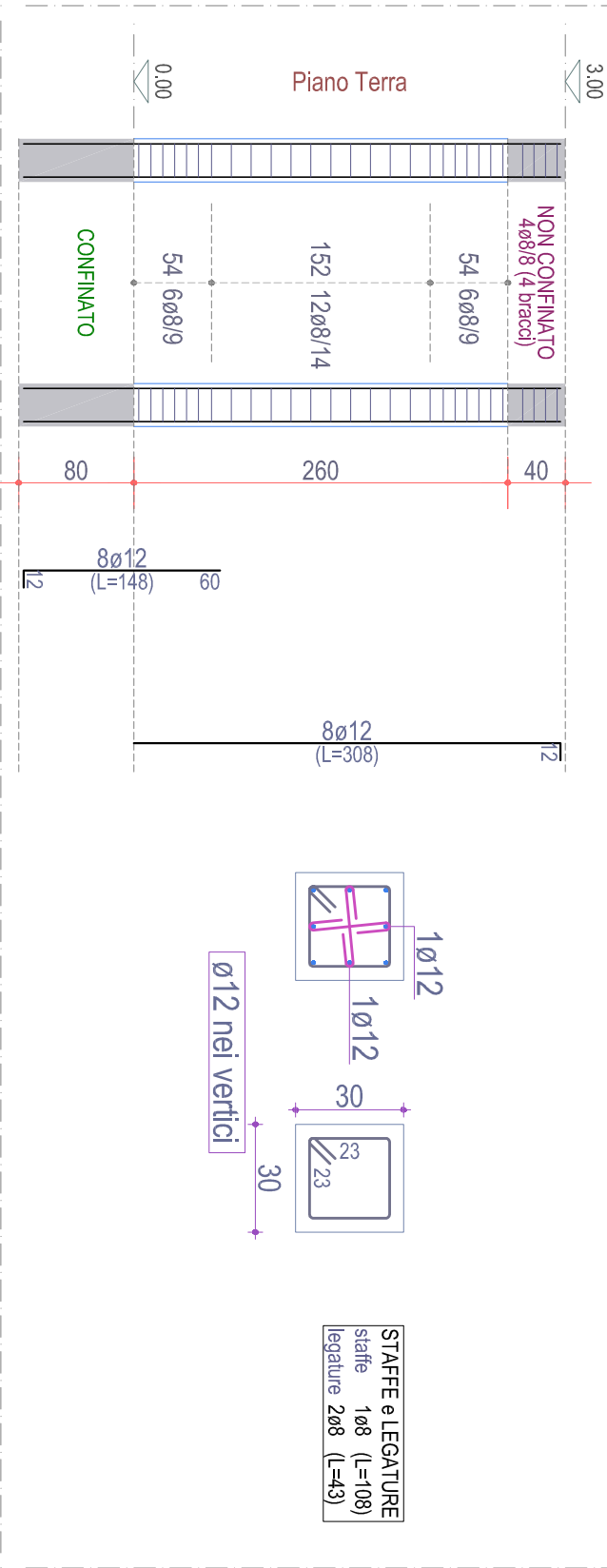
Scala: 1/50

PILASTRATA 3



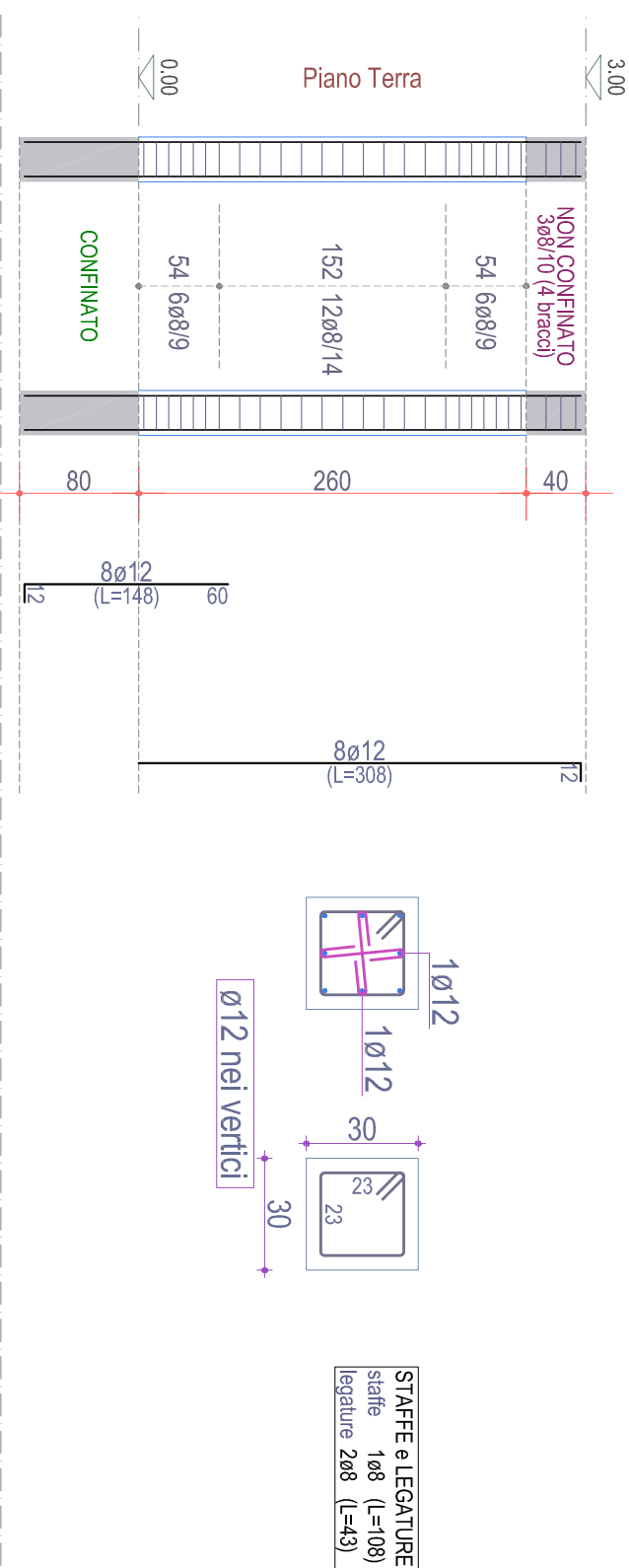
Scala: 1/50

PILASTRATA 5



Scala: 1/50

PILASTRATA 9

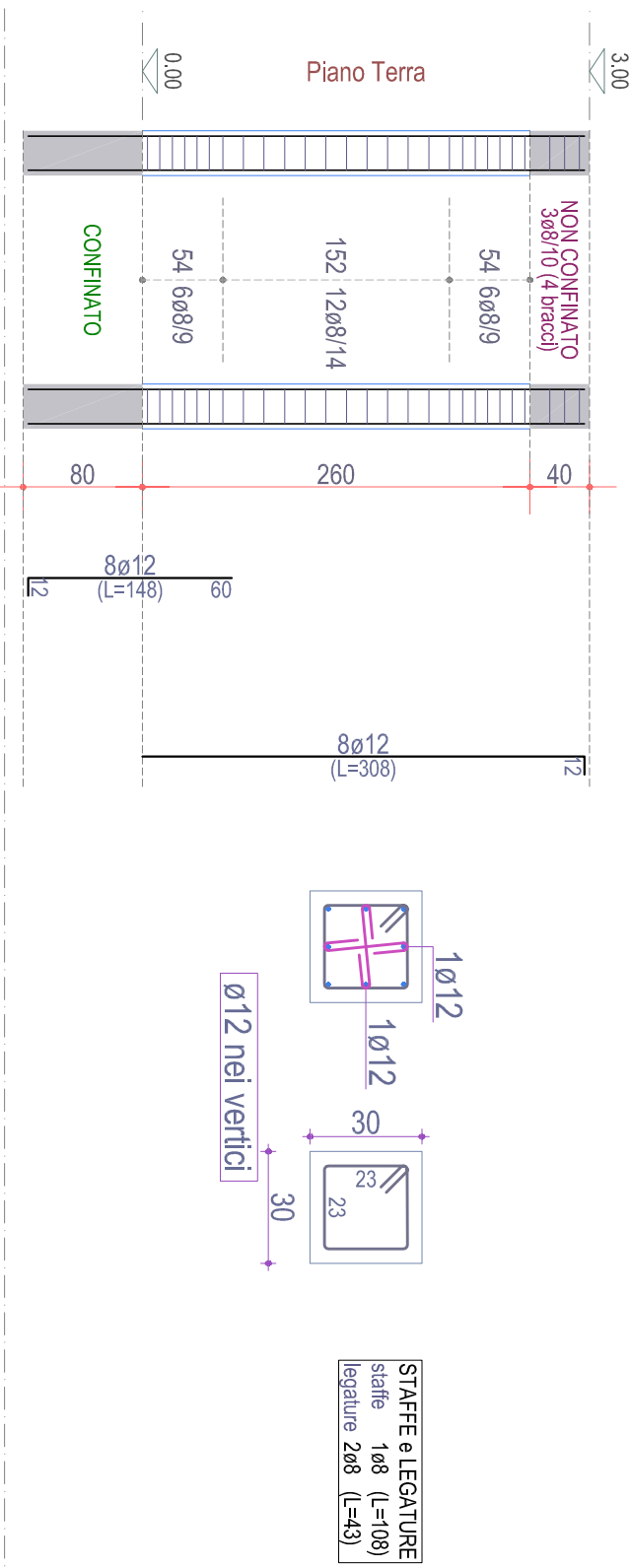


Scala: 1/50

TABELLA PILASTRI: Piano Terra

7		8		9	
4		5		6	
1		2		3	

PILASTRATA 4



Scala: 1/50



COMUNE DI CAPACCIO PAESTUM (SA)
AREA IV
Lavori pubblici - Opere pubbliche - Servizi edili integrati -
Programmazione strategica e finanziamenti Europei - BDAE - VAS



ADEGUAMENTO CAMPO SPORTIVO "TENENTE VAUDANO"

Progetto esecutivo approvato con
☐ delibera di CC ☐ delibera di CC ☐ Delibera di CC
n. _____ del _____ 2013
Dirigente



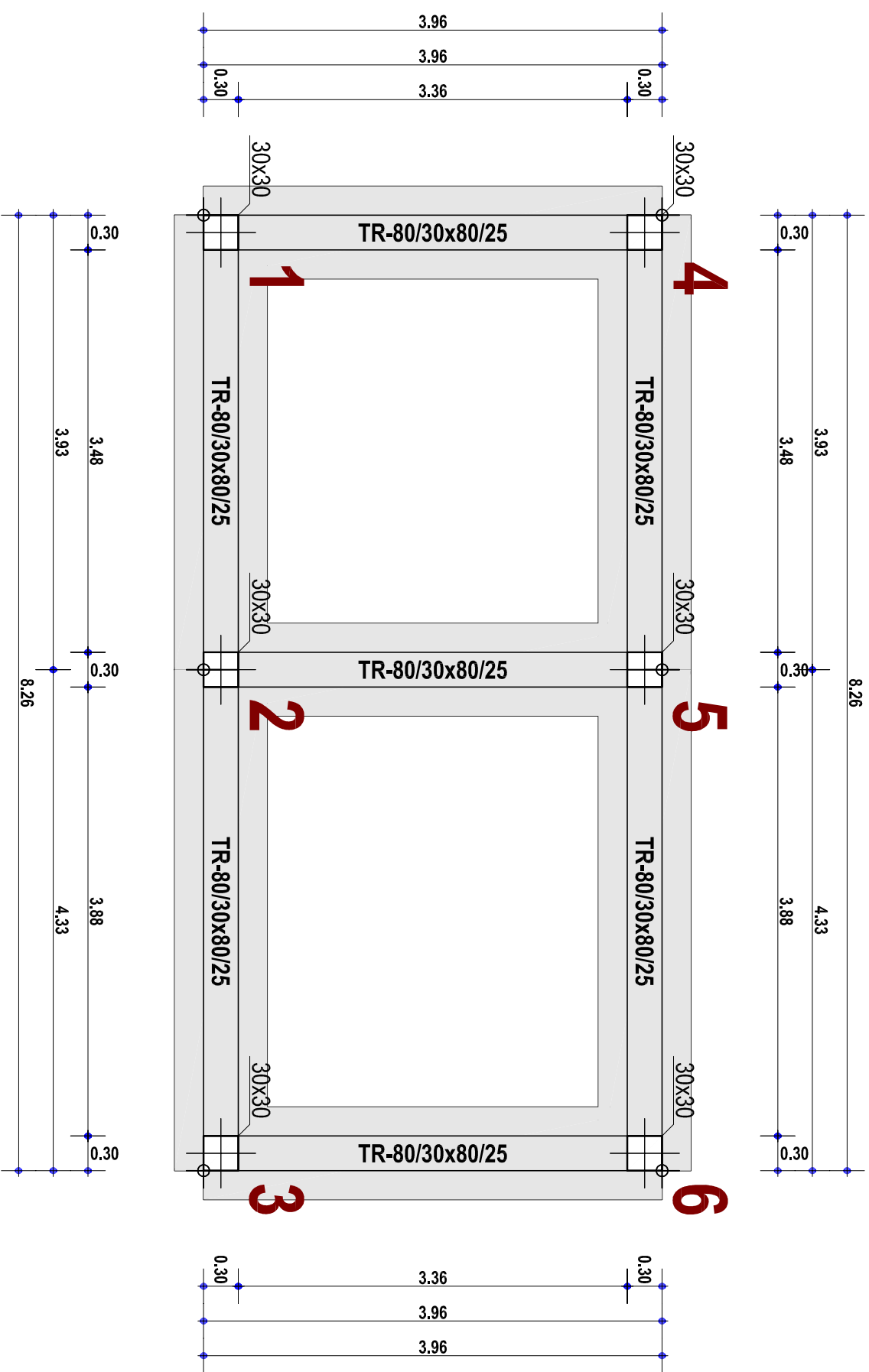
RUP: Ing. Giovanni Vito BELLO
Progettista: Ing. Giovanni Vito BELLO
Collaboratori: Ing. Ettore TADDEO
arch. Carlo PECORARO

Commissario					
Dott.ssa Rosa Maria PALUSCA					
Segretario Generale					
dott. Andrea D'AMORE					
VERB. N°	VERSIONE INIZIALE	VERSIONE APPROVATA	DATA DATA DI	DATA DATA DI	DATA DATA DI

Esecutivo pilastri - biglietteria e bagni tifosi ospiti.

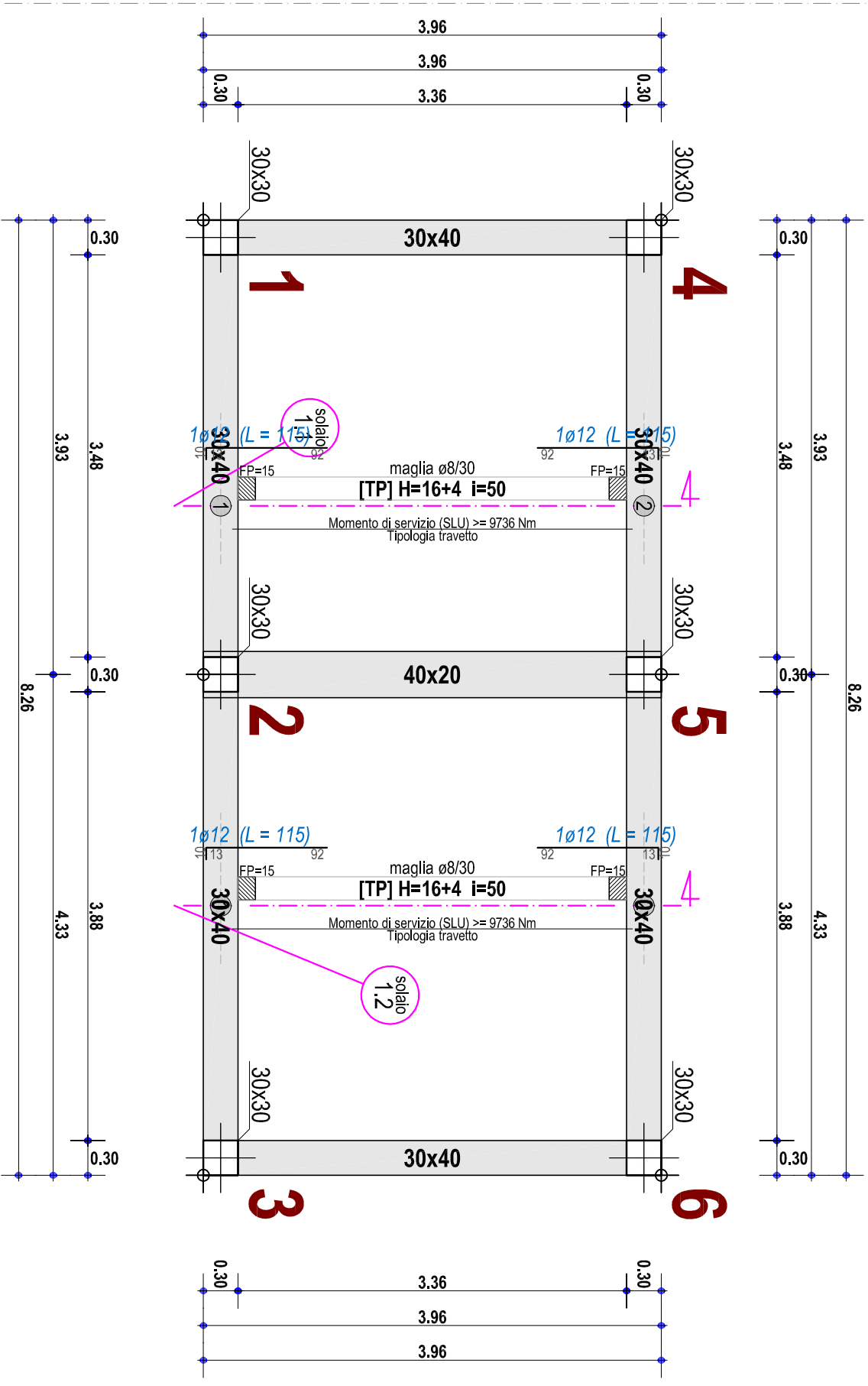
PROGETTO
SISTEMA
STRUTTURALE
NUMERO
6.1.2
RAFF. 1:50

FONDAZIONE



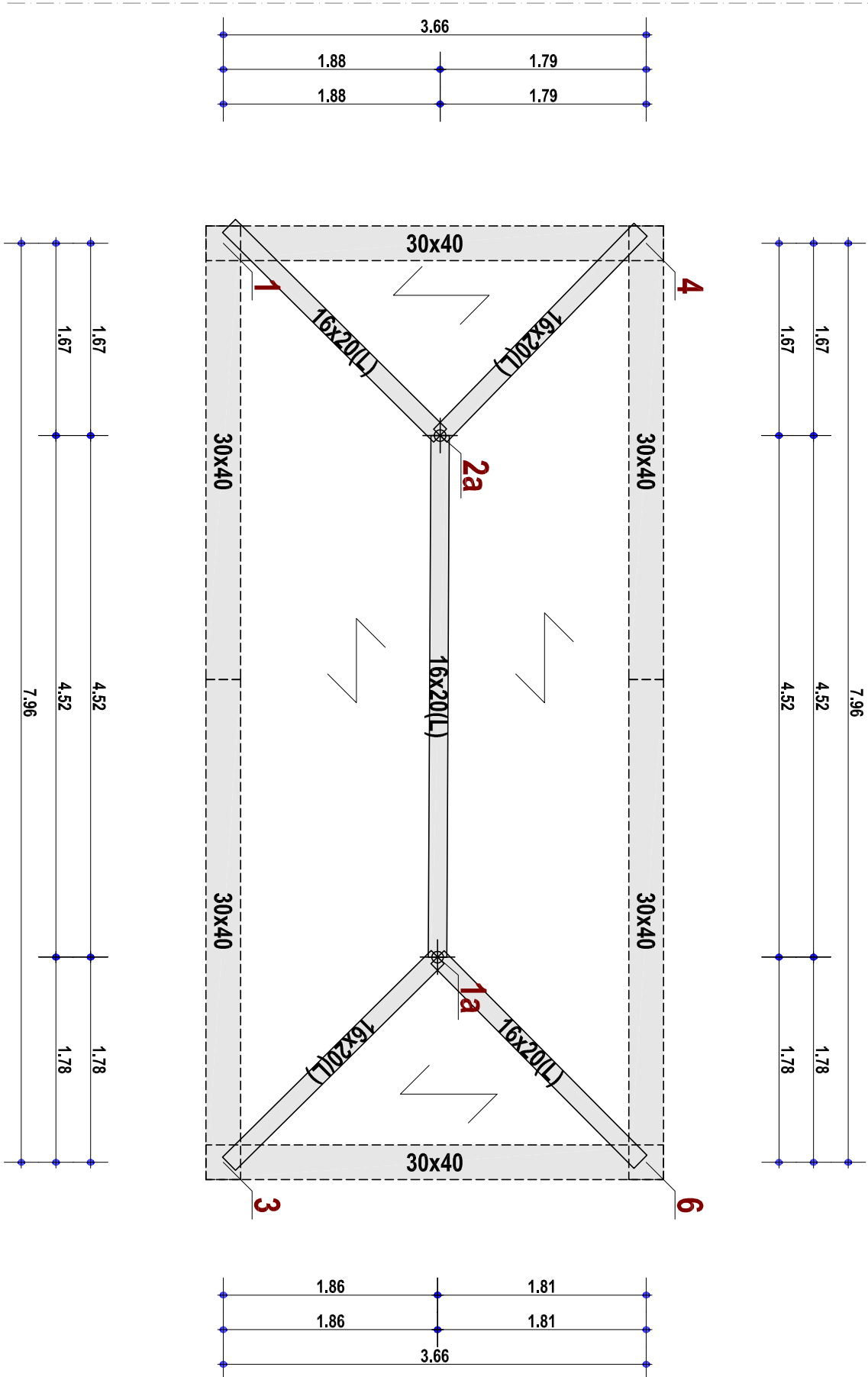
Scala: 1/50

PIANO TERRA



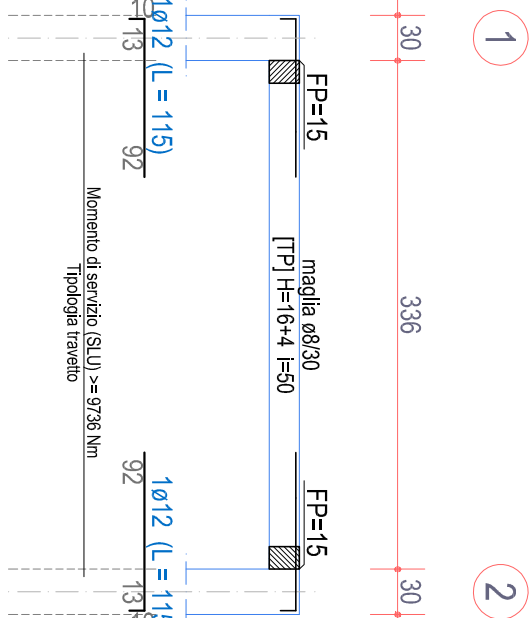
Scala: 1/50

PIANO COPERTURA



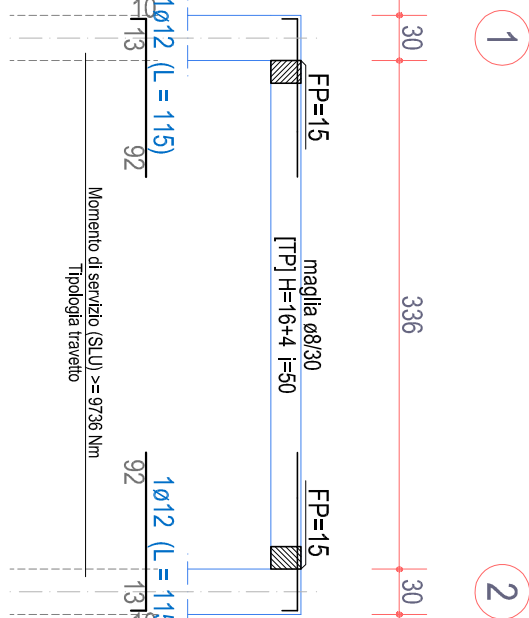
Scala: 1/50

SOLAIO 1.1



Scala: 1/50

SOLAIO 1.2



Scala: 1/50



COMUNE DI CAPACCIO PAESTUM (SA)
DIRETTORE GENERALE
Lavori pubblici - Opere pubbliche - Servizi edili integrati -
Programmazione strategica e finanziamenti Europei - BDAE - VAS



ADEGUAMENTO CAMPO SPORTIVO "TENENTE VAUDANO"

Progetto esecutivo approvato con
☐ Delibera di CC ☐ Delibera di CC ☐ Delibera di CC
n. _____ del _____ 2013



RUP: Ing. Giovanni Vito BELLO

Progettista: Ing. Giovanni Vito BELLO
Collaboratori: Ing. Ettore TADDEO
arch. Carlo PECORARO

Commissario
Dott.ssa Rosa Maria PALASCA

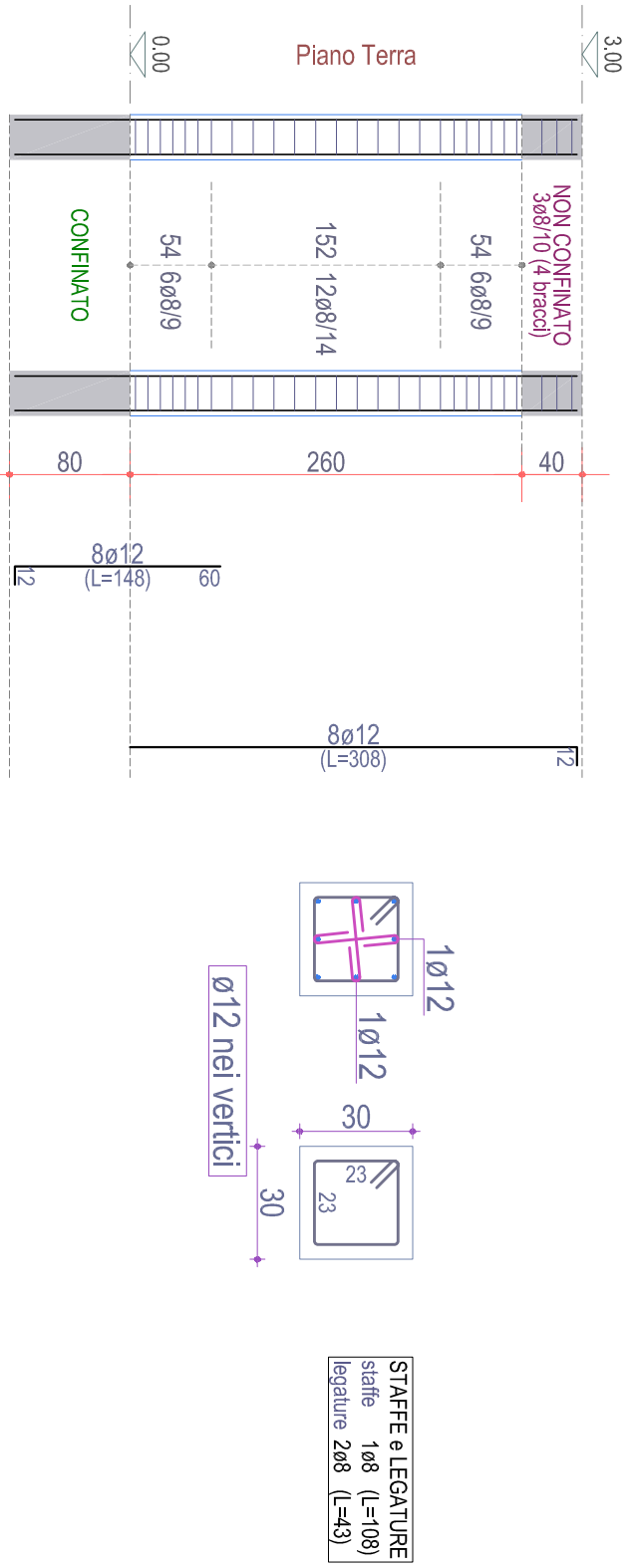
Segretario Generale
dott. Andrea D'AMORE

VER. N°	VERSIONE INIZIALE	APPROVAZIONE
1.0	NOTA DI PRESENTAZIONE	NOTA DI PRESENTAZIONE

Esecutivo carpenteria - Bagni tifosi locali

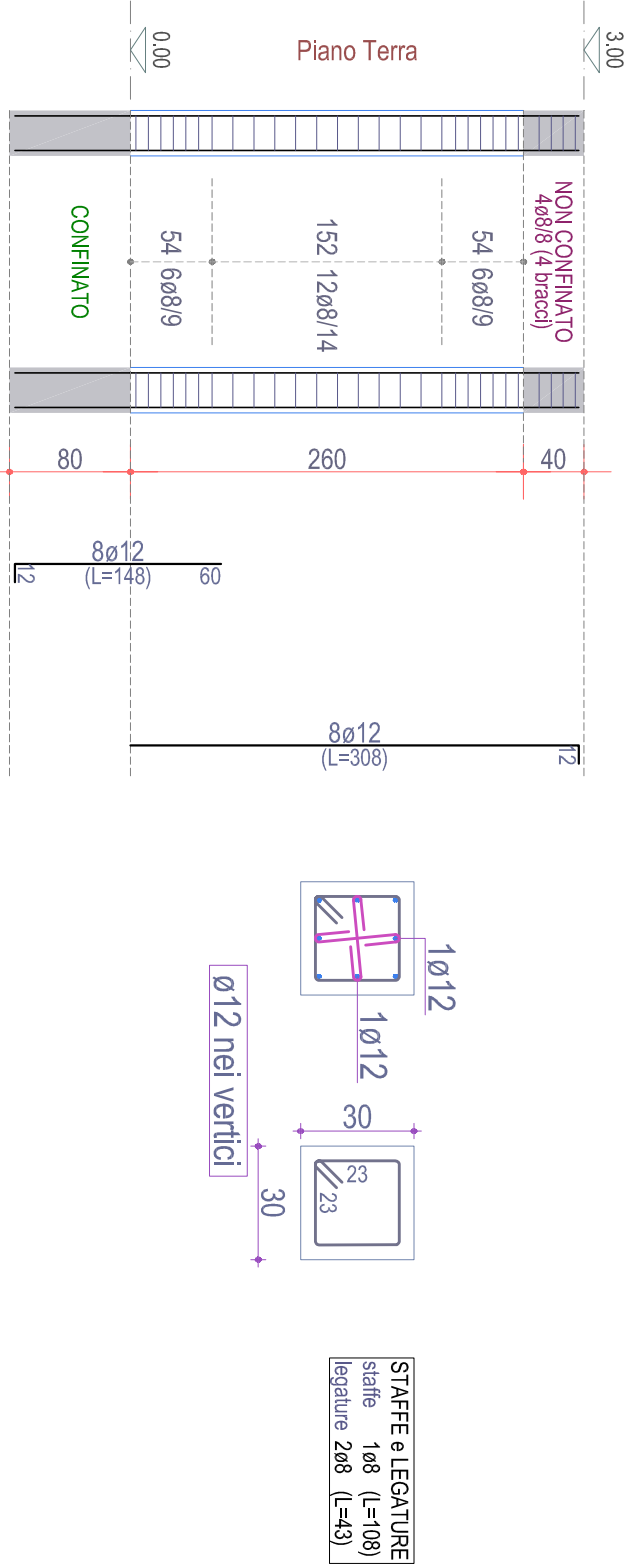
PROGETTO
SERIE
STR
NUMERO
6.2.1
RA.PP.
1:50

PILASTRATA 1



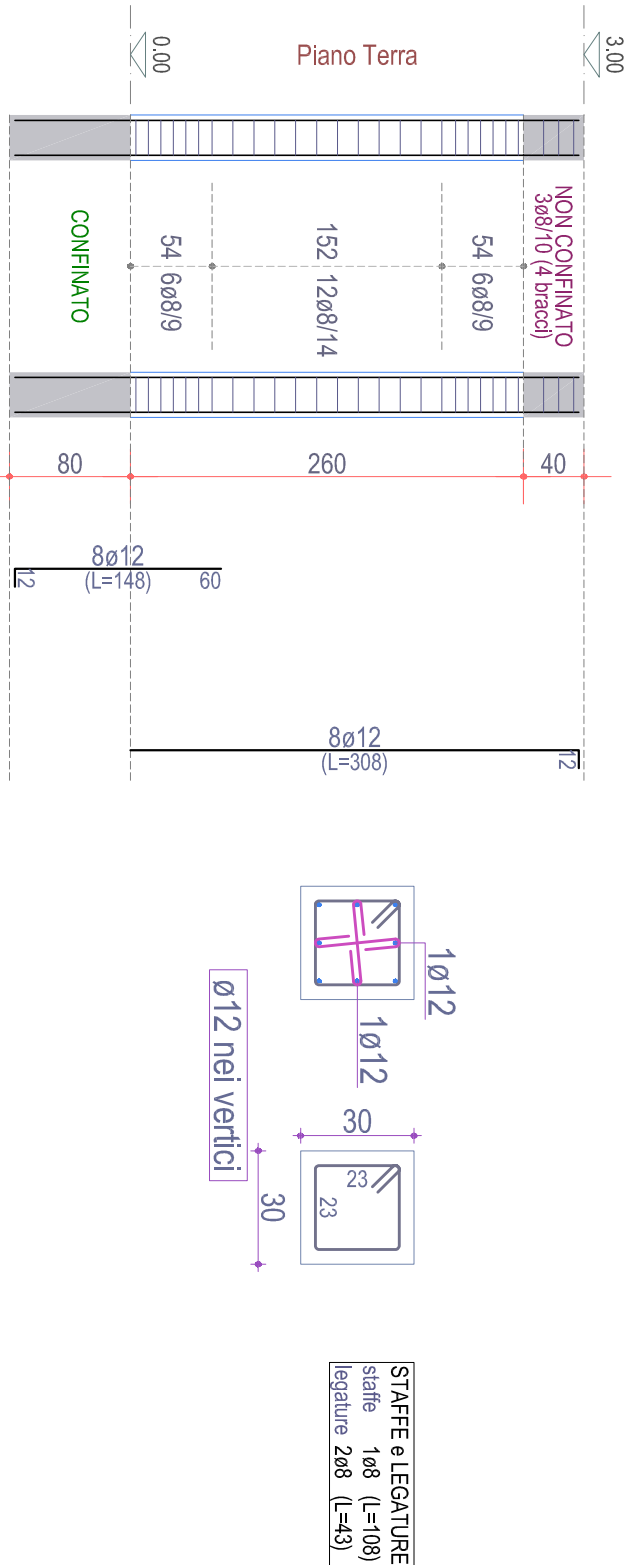
Scala: 1/50

PILASTRATA 2



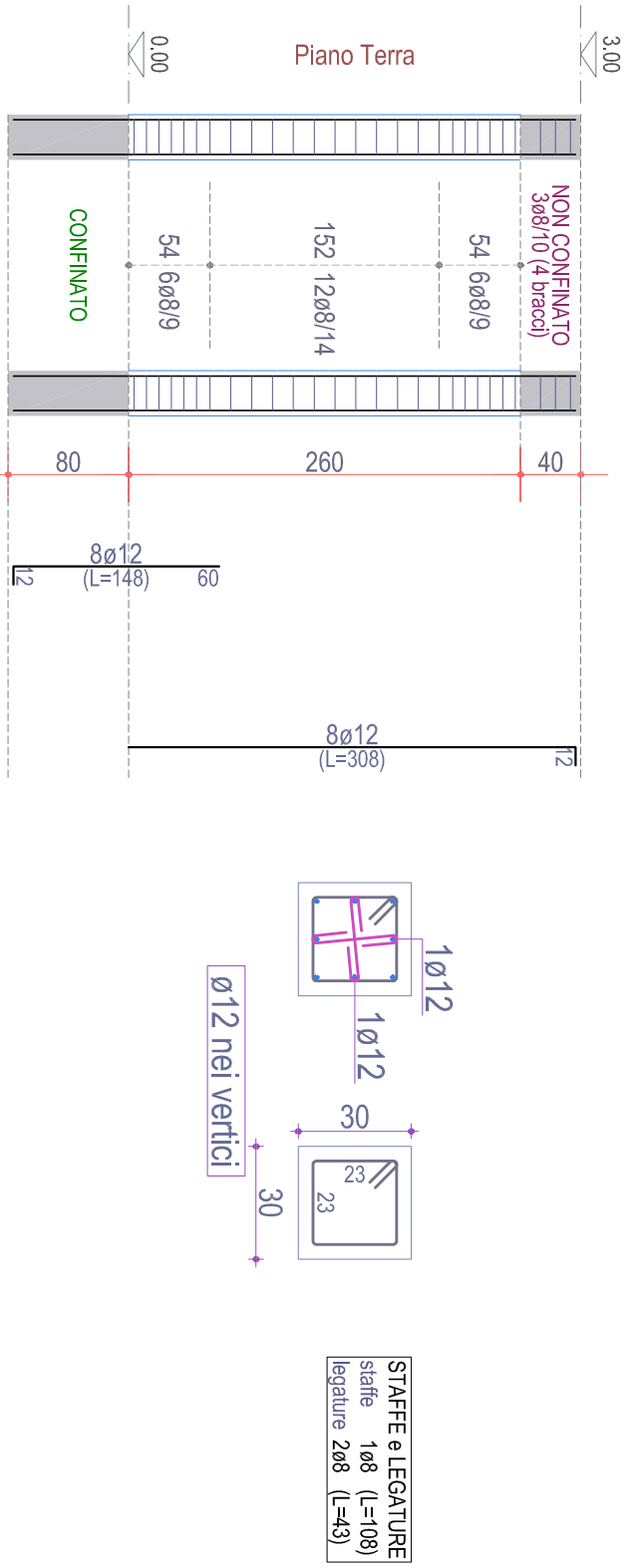
Scala: 1/50

PILASTRATA 3



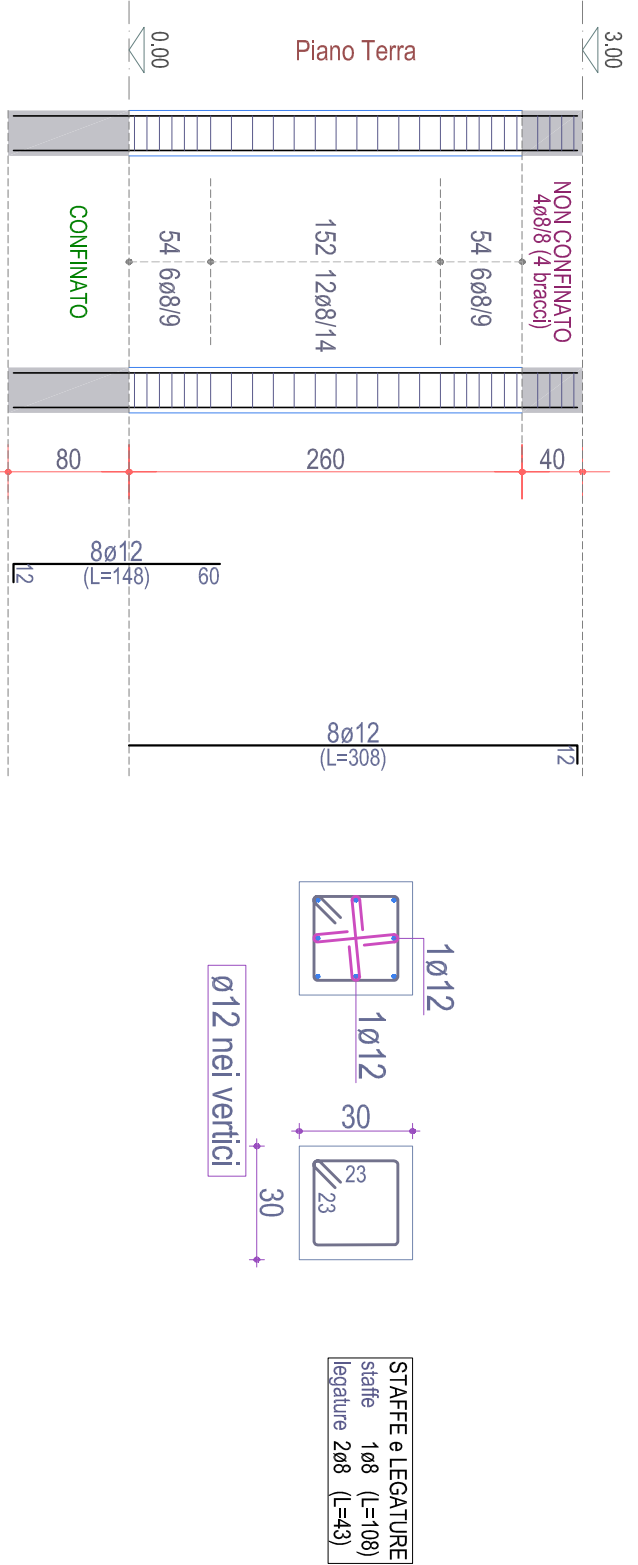
Scala: 1/50

PILASTRATA 4



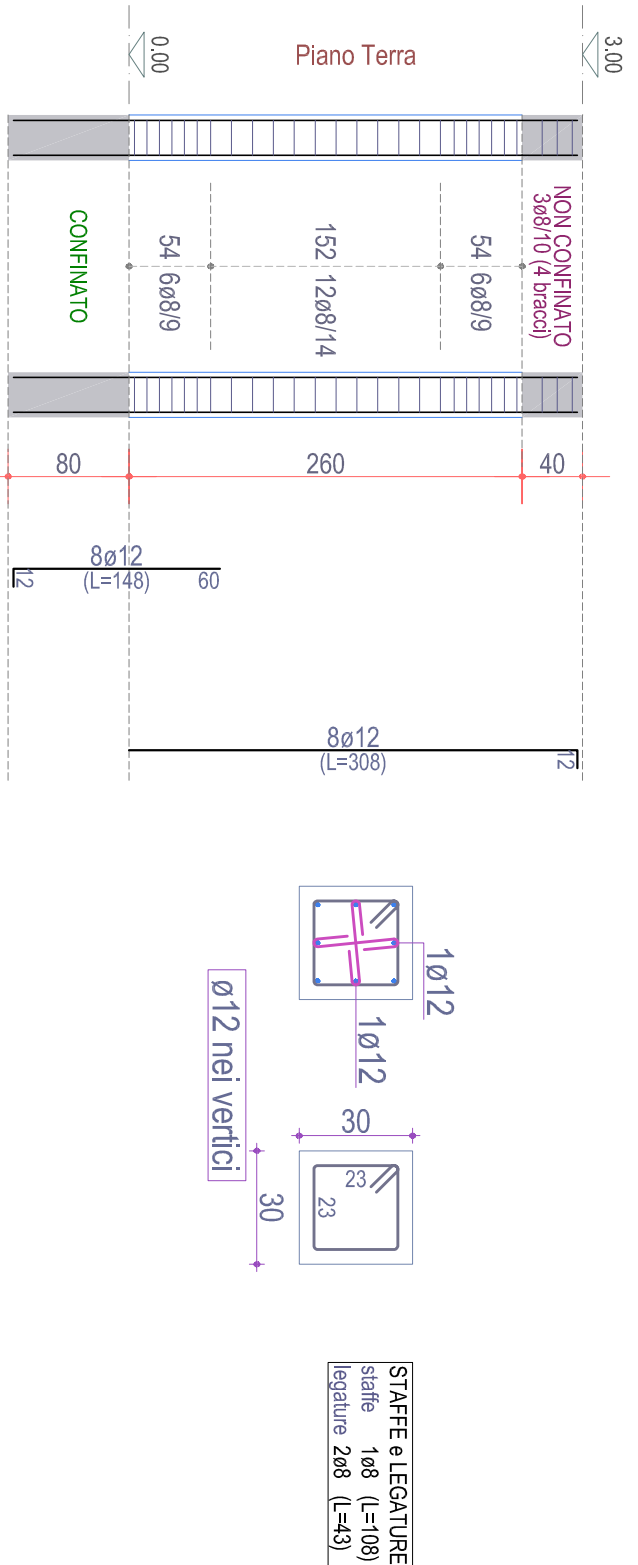
Scala: 1/50

PILASTRATA 5



Scala: 1/50

PILASTRATA 6



Scala: 1/50

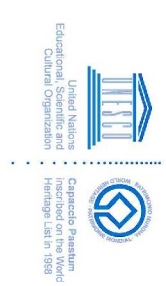
TABELLA PILASTRI: Piano Terra

<p>3</p> <p>10×12</p> <p>10×12</p> <p>10×12</p> <p>10×12</p> <p>$\varnothing 12$ nei vertici</p> <p>PASSO STAFFE 6669: appoggi per 54 cm 1268/14: mezzafila per 152 cm 386/10: (4 bracci) nel nodo STAFFE e LEGATURE sfilare 168 (L=108) legature 246 (L=43)</p>	<p>4</p> <p>10×12</p> <p>10×12</p> <p>10×12</p> <p>10×12</p> <p>$\varnothing 12$ nei vertici</p> <p>PASSO STAFFE 6669: appoggi per 54 cm 1268/14: mezzafila per 152 cm 386/10: (4 bracci) nel nodo STAFFE e LEGATURE sfilare 168 (L=108) legature 246 (L=43)</p>	<p>5</p> <p>10×12</p> <p>10×12</p> <p>10×12</p> <p>10×12</p> <p>$\varnothing 12$ nei vertici</p> <p>PASSO STAFFE 6669: appoggi per 54 cm 1268/14: mezzafila per 152 cm 386/10: (4 bracci) nel nodo STAFFE e LEGATURE sfilare 168 (L=108) legature 246 (L=43)</p>
<p>1</p> <p>10×12</p> <p>10×12</p> <p>10×12</p> <p>10×12</p> <p>$\varnothing 12$ nei vertici</p> <p>PASSO STAFFE 6669: appoggi per 54 cm 1268/14: mezzafila per 152 cm 386/10: (4 bracci) nel nodo STAFFE e LEGATURE sfilare 168 (L=108) legature 246 (L=43)</p>	<p>2</p> <p>10×12</p> <p>10×12</p> <p>10×12</p> <p>10×12</p> <p>$\varnothing 12$ nei vertici</p> <p>PASSO STAFFE 6669: appoggi per 54 cm 1268/14: mezzafila per 152 cm 386/10: (4 bracci) nel nodo STAFFE e LEGATURE sfilare 168 (L=108) legature 246 (L=43)</p>	<p>6</p> <p>10×12</p> <p>10×12</p> <p>10×12</p> <p>10×12</p> <p>$\varnothing 12$ nei vertici</p> <p>PASSO STAFFE 6669: appoggi per 54 cm 1268/14: mezzafila per 152 cm 386/10: (4 bracci) nel nodo STAFFE e LEGATURE sfilare 168 (L=108) legature 246 (L=43)</p>

Scala: 1/50



COMUNE DI CAPACCIO PAESTUM (SA)
AREA VI
Lavori pubblici - Opere pubbliche - Servizi idrici integrati -
Programmazione strategica e finanziamenti Europei - BDAP - VAS



ADEGUAMENTO CAMPO SPORTIVO "TENENTE VAUDANO"

Progetto esecutivo approvato con
☐ Delibera di CC ☐ Delibera di GC ☐ Determinazione Dirigenziale
 n. ____ del ____/____/2019



RUP: ing. Giovanni Vito BELLO

Progettista: ing. Giovanni Vito BELLO
Collaboratori: ing. Errico TADDEO

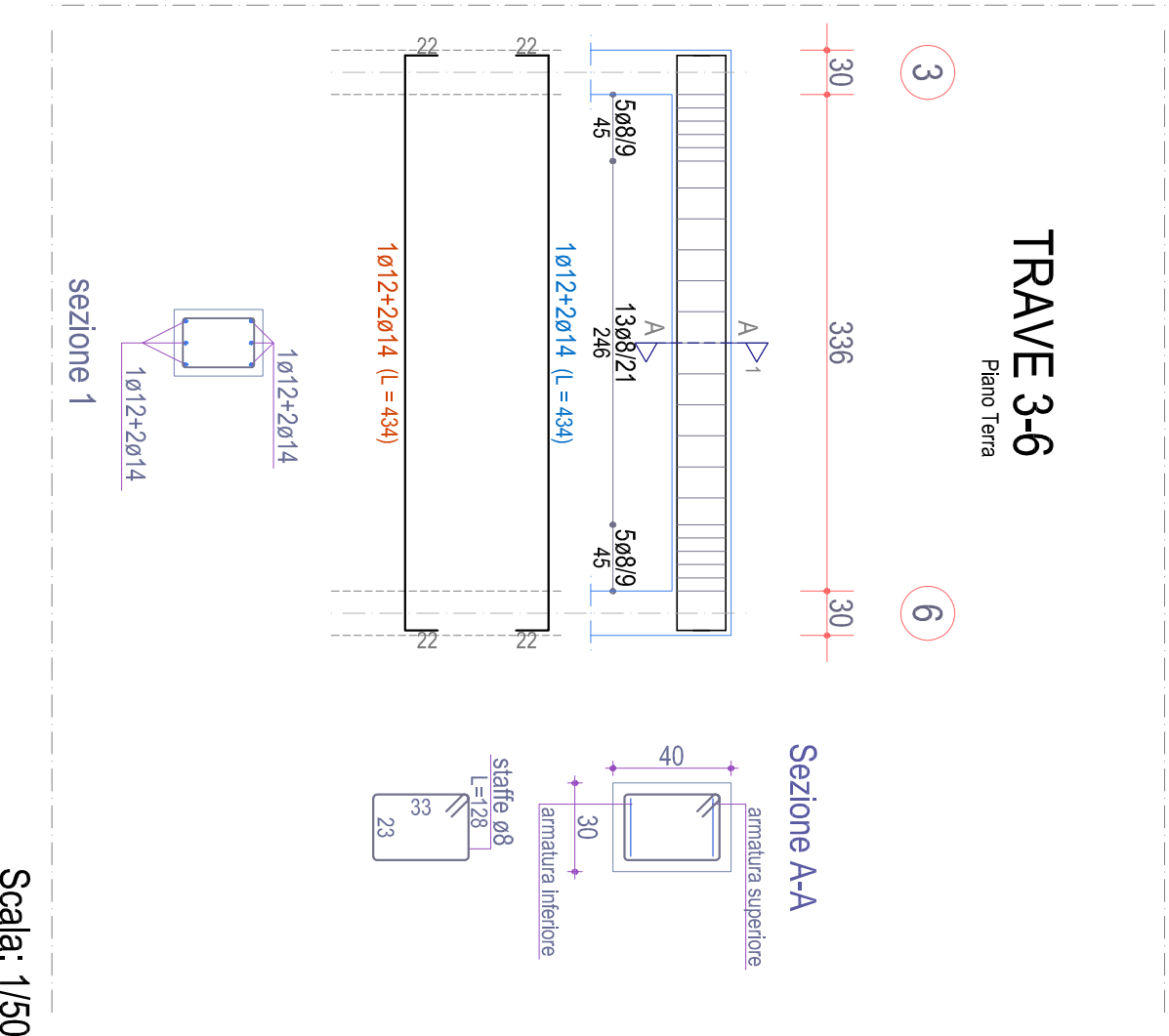
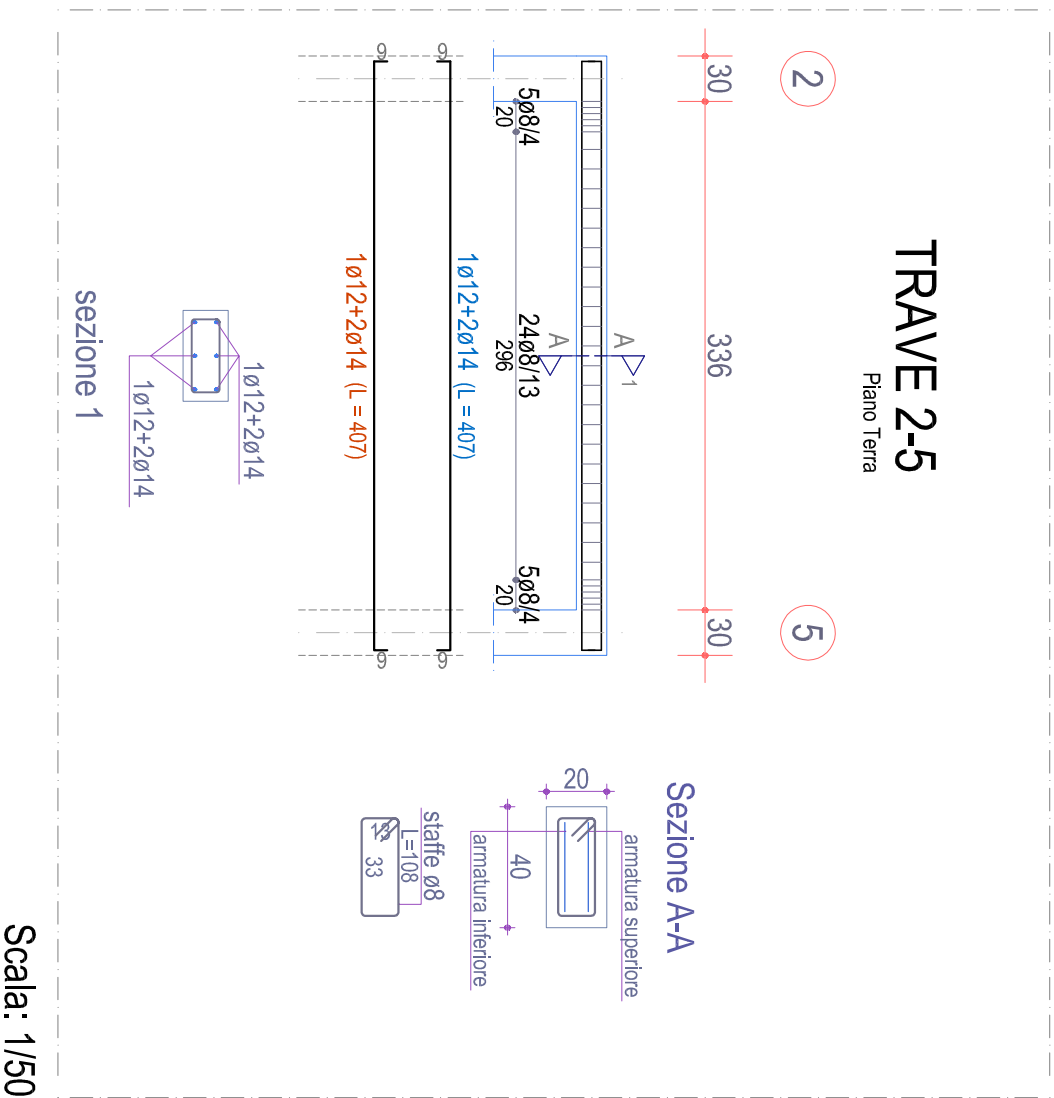
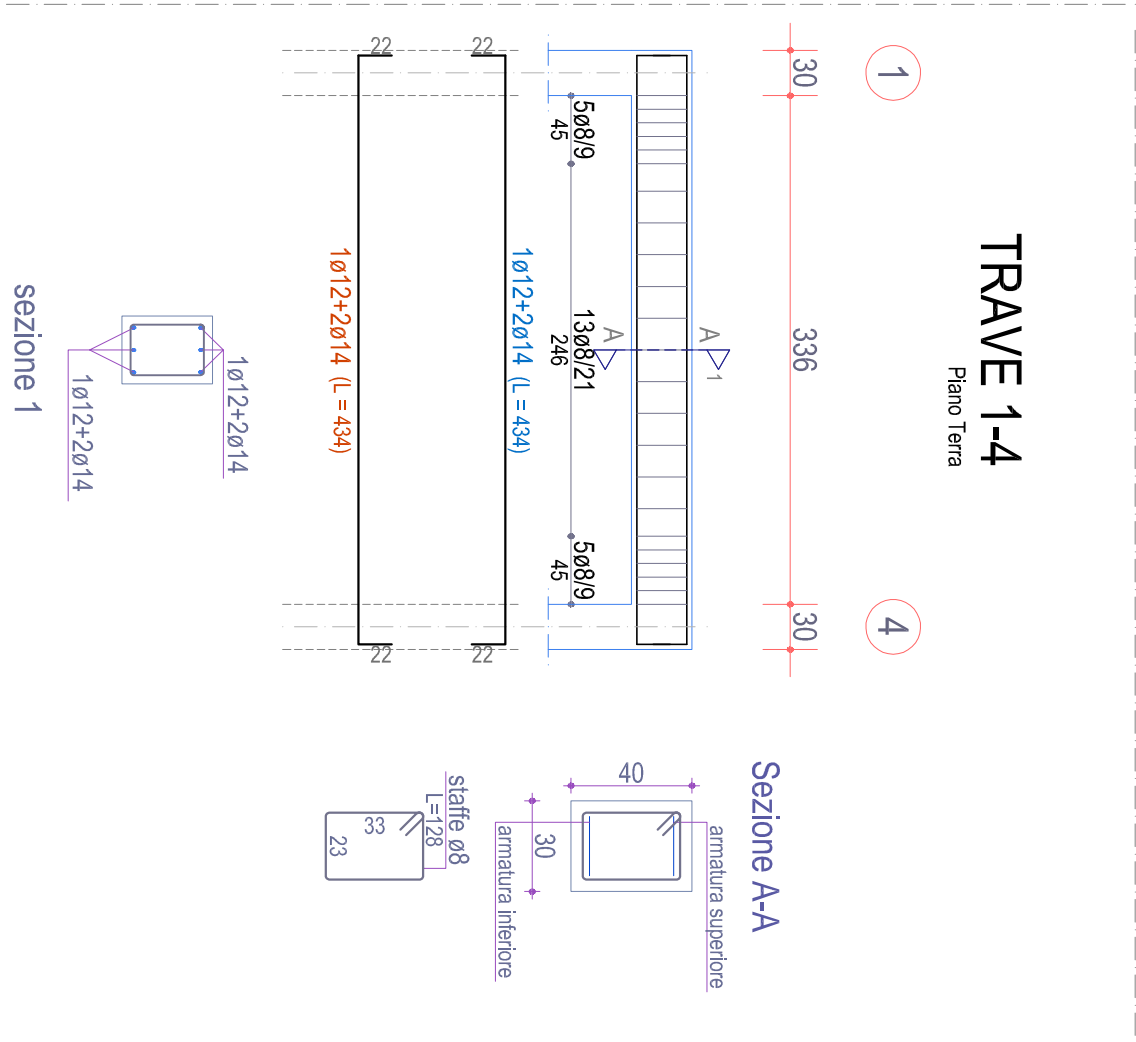
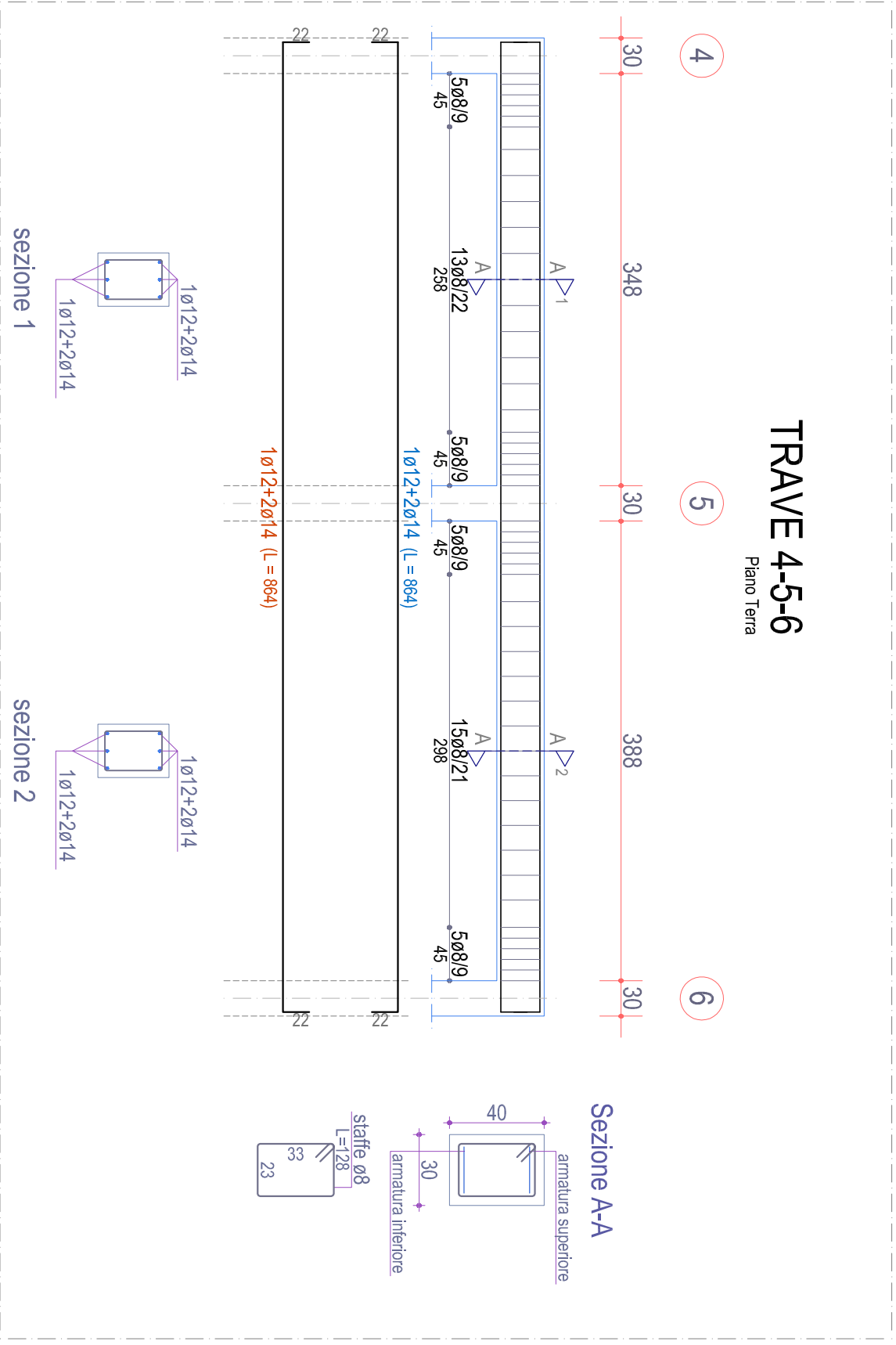
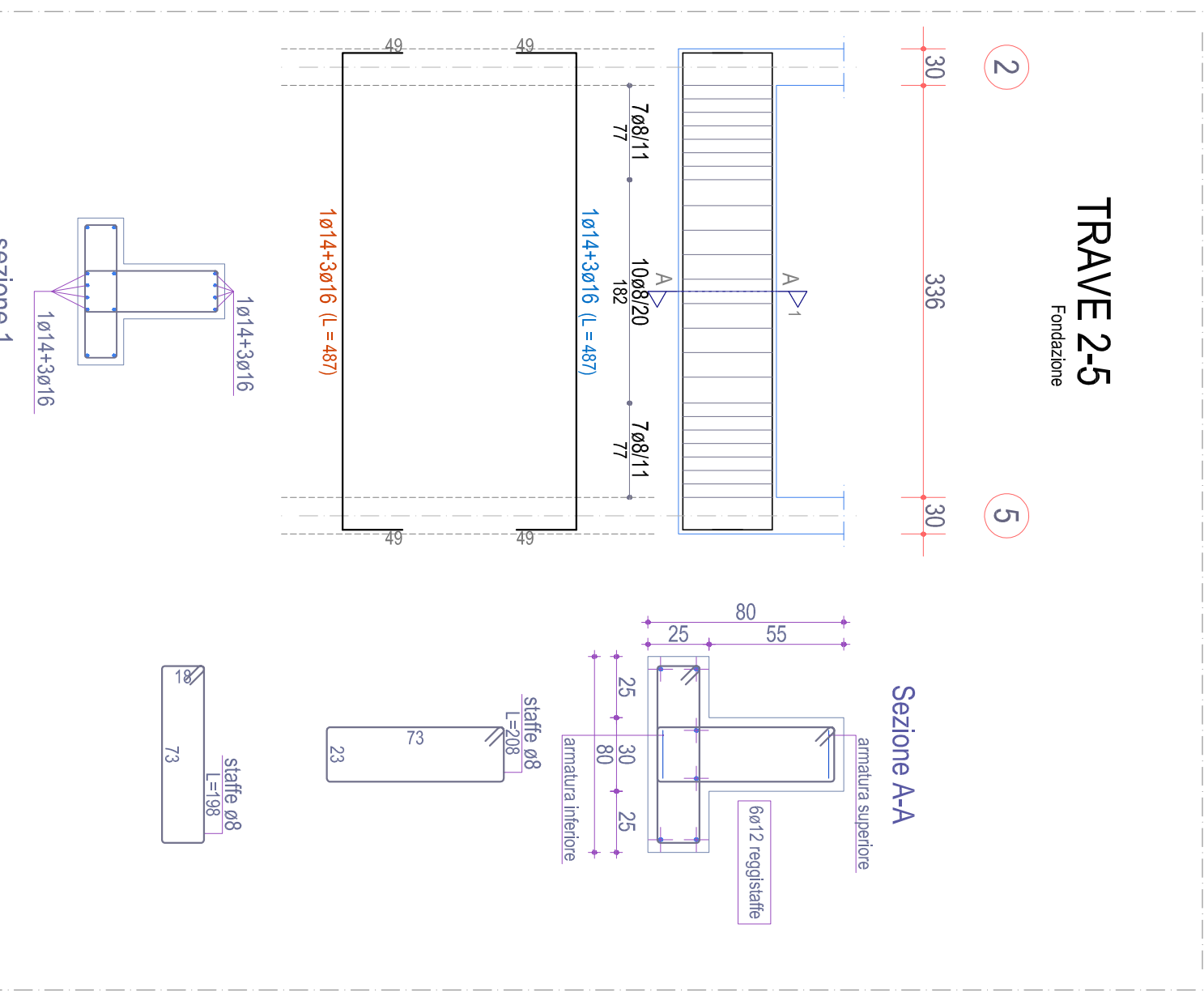
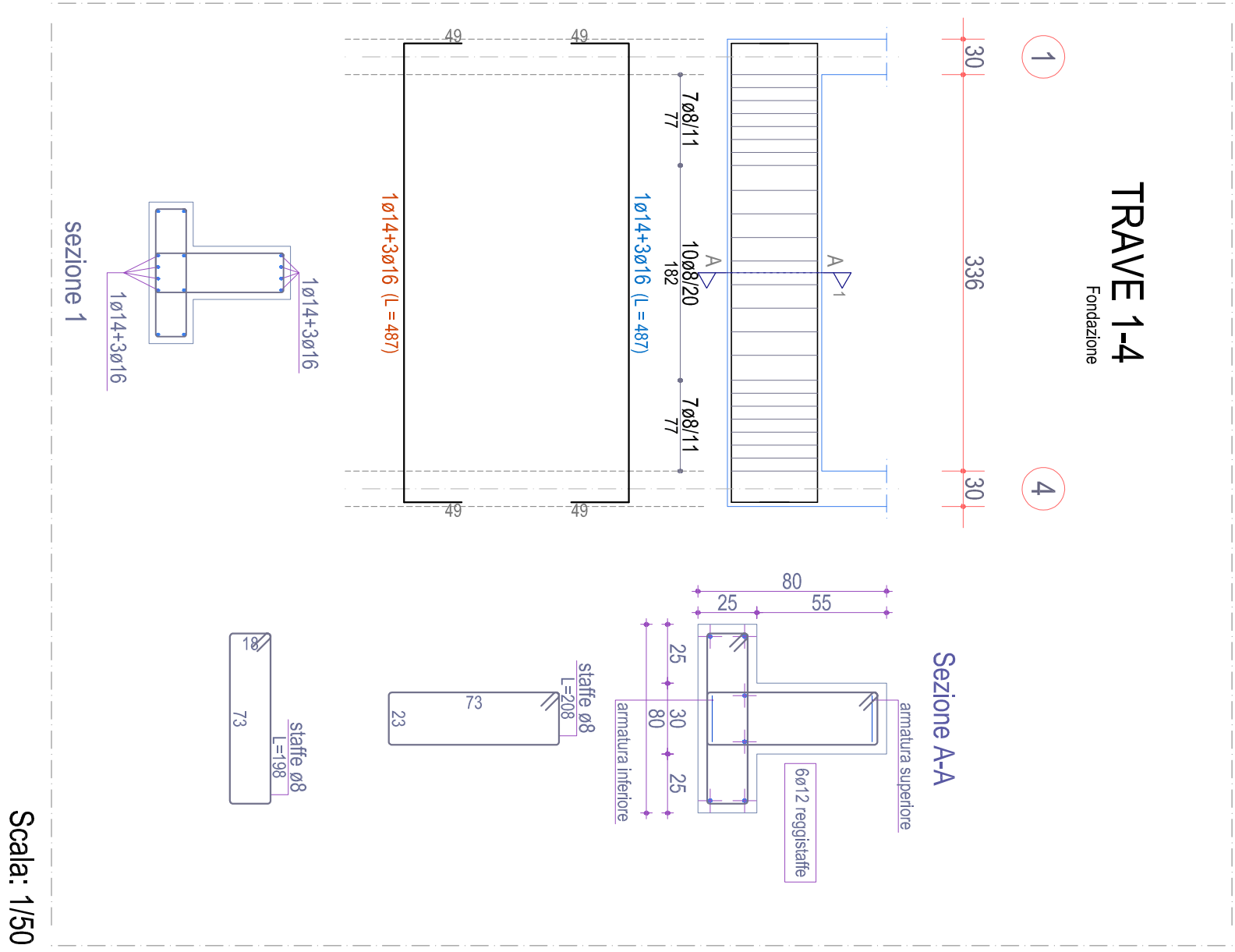
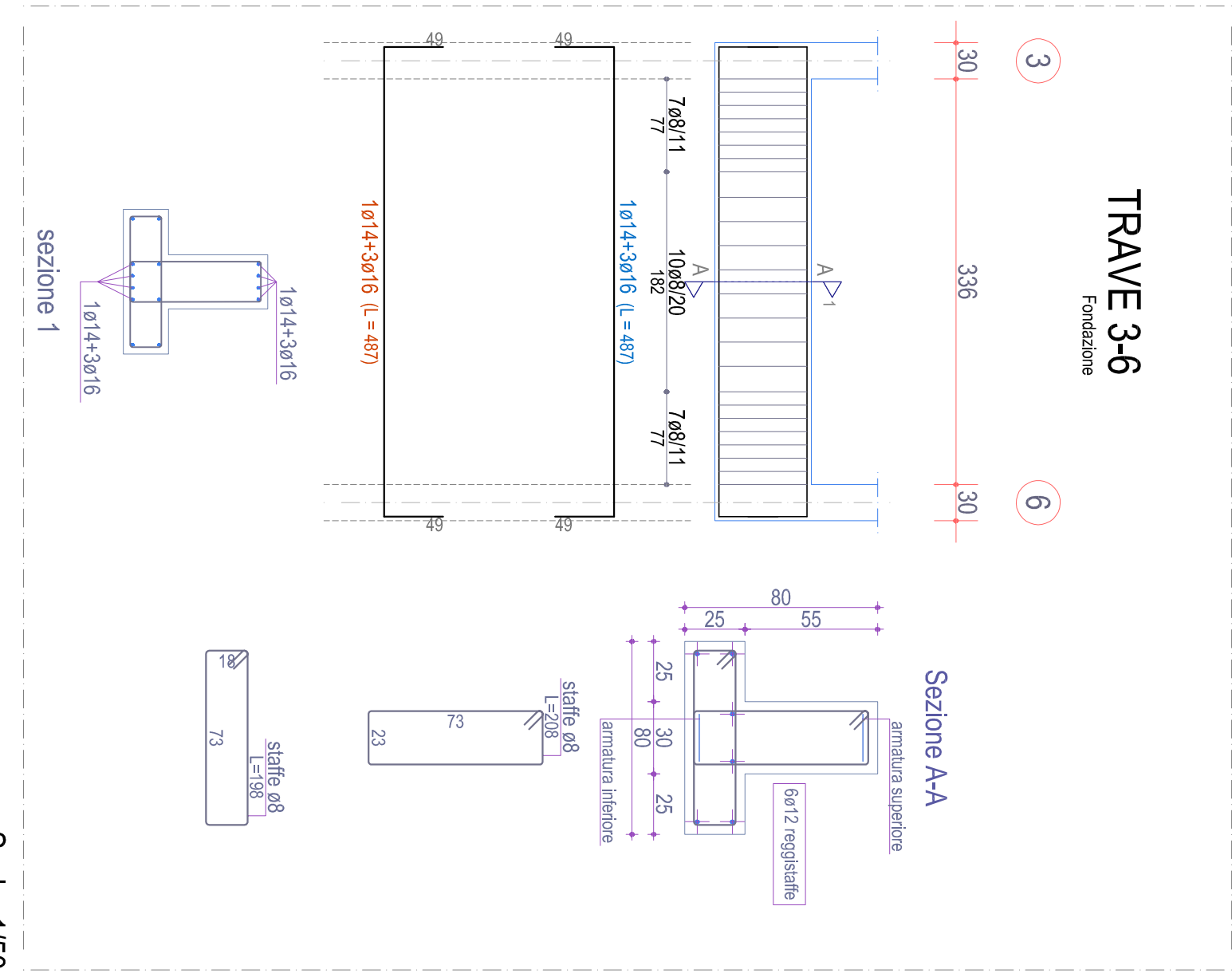
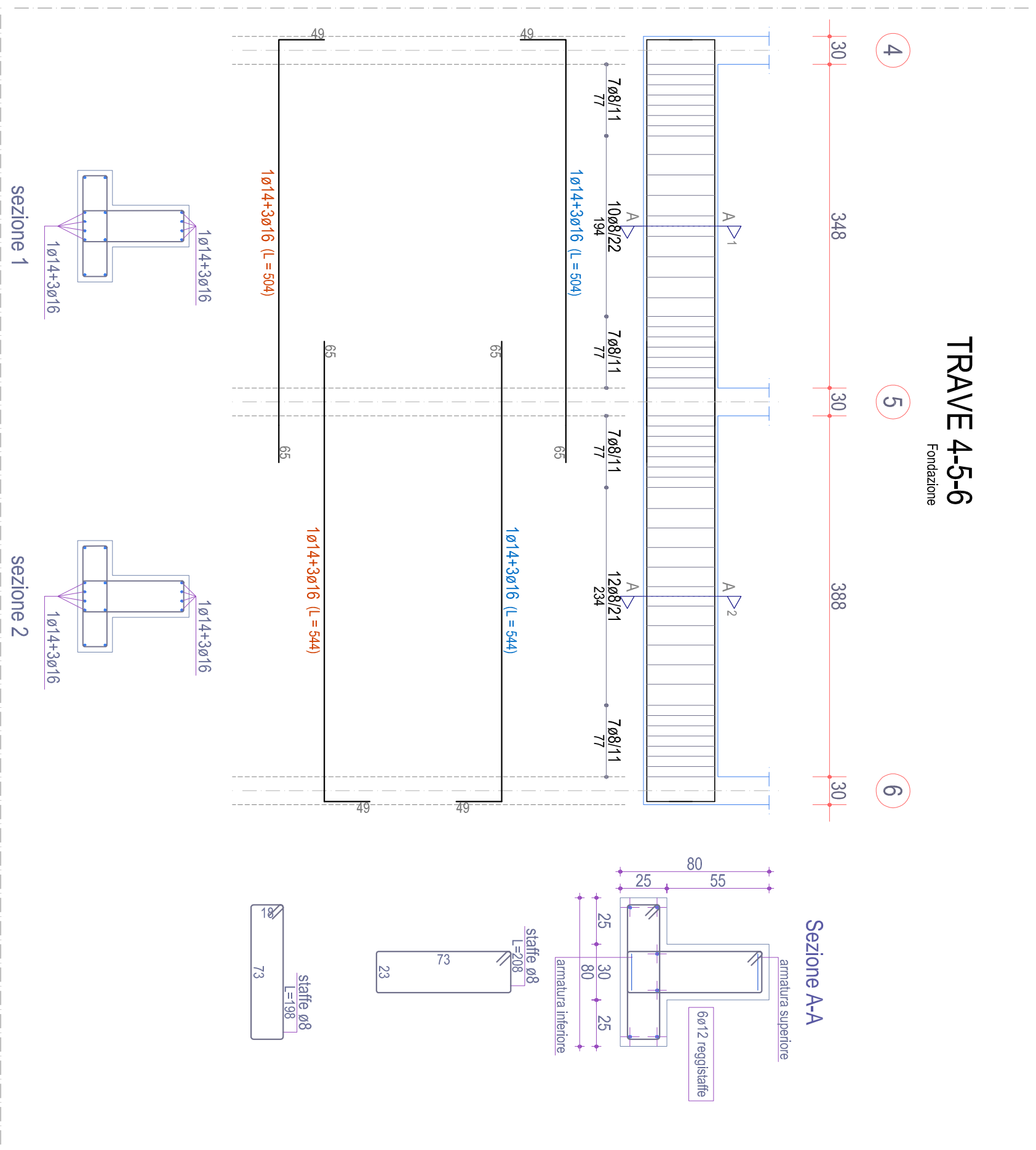
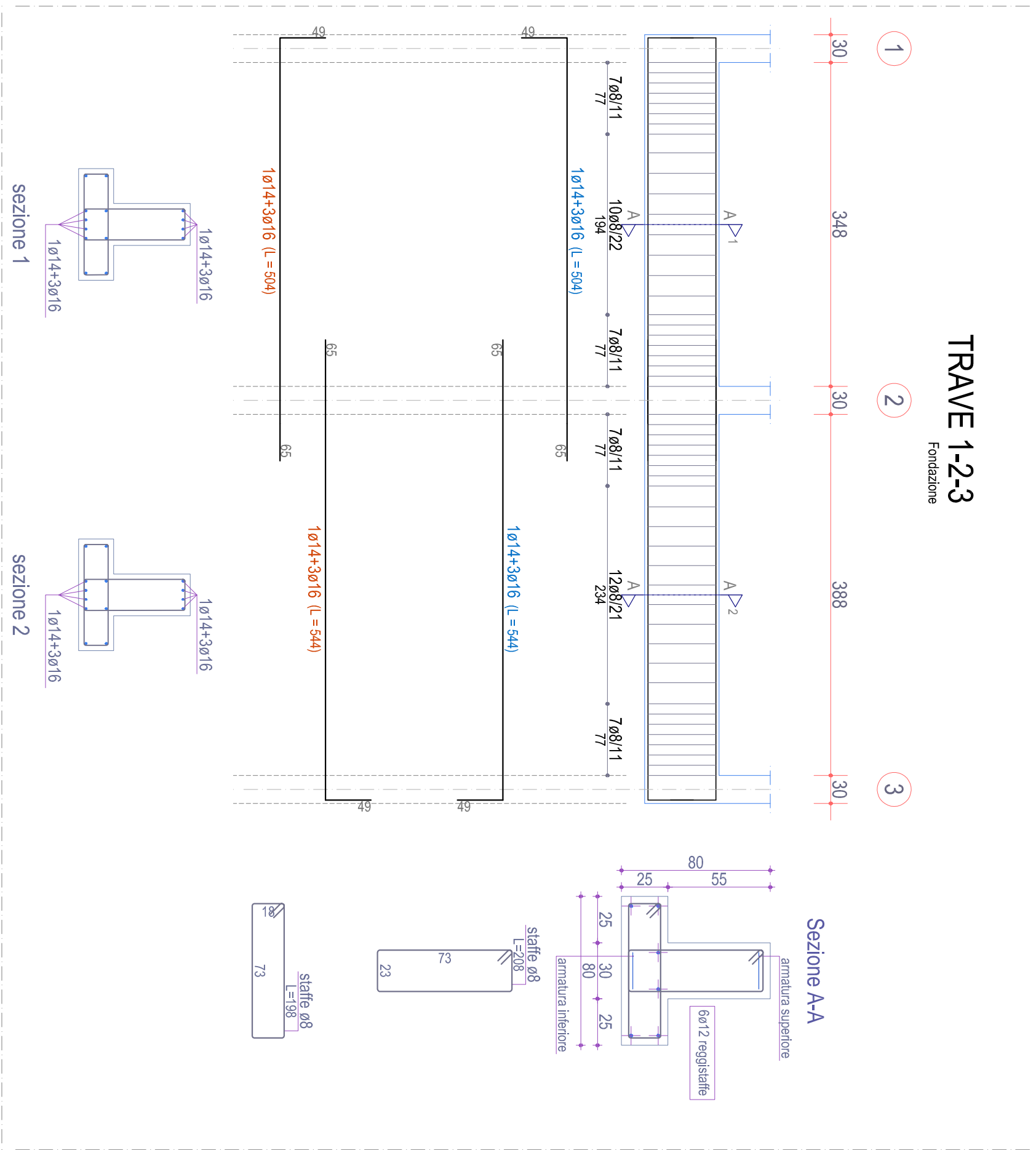
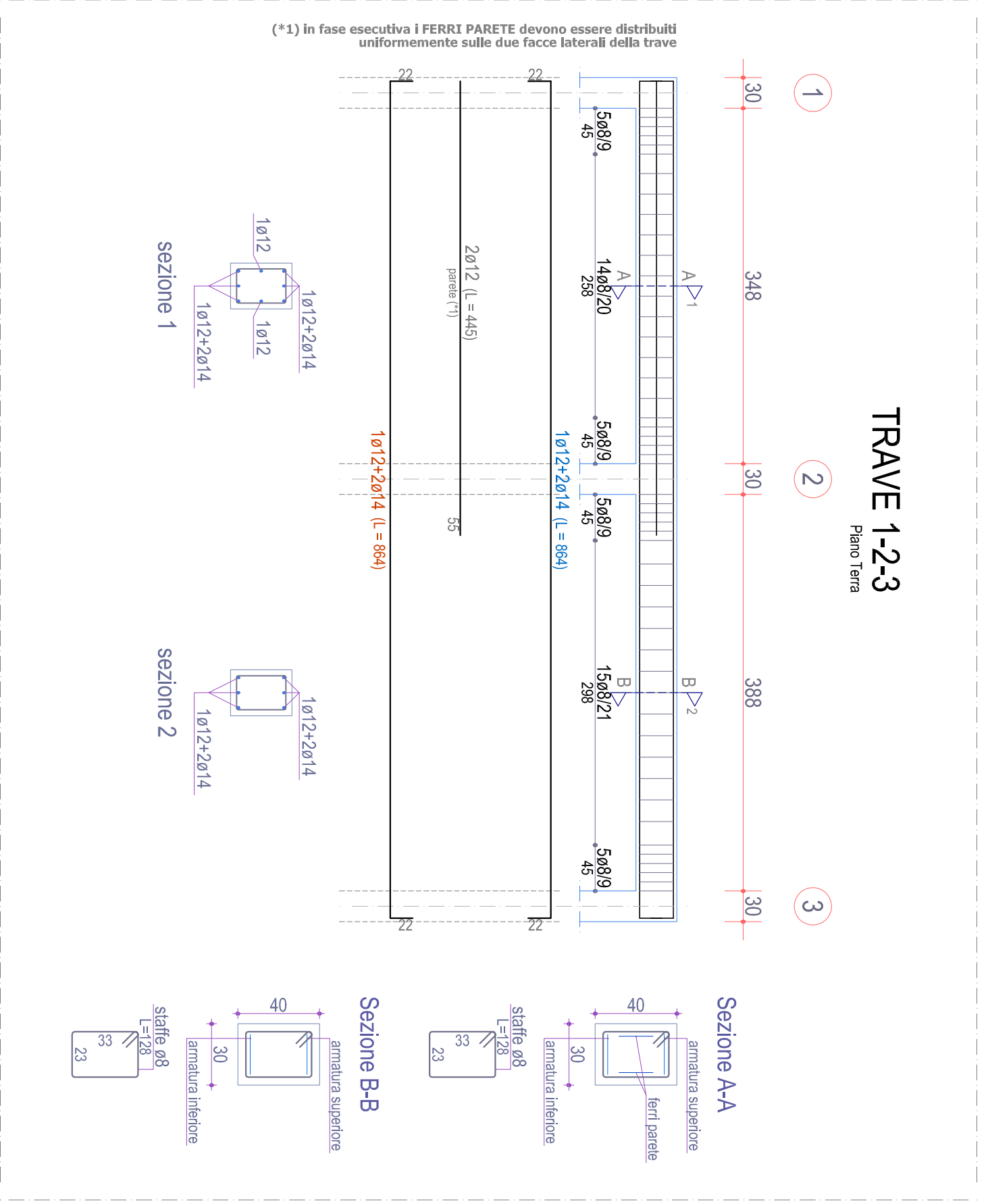
arch. Carlo PECORARO

Commissario
sa Rosa Maria FALASCA

1.0	VERSIONE INIZIALE	VEDI DATA DI APPROVAZIONE
VER. N°	NOTE DI VERSIONE	DATA VERSIONE

Esecutivo pilastri - Bagni tifosi locali

PROGETTO
--
SERIE
STR
NUMERO
6.2.2
RAPP.
1:50



COMUNE DI CAPACCIÒ PRAESTIUM (SA)
ARENA VI
Lavori realizzo: Costruzione e ampliamento del campo sportivo.
Programmazione strategica e funzionale Europa BOLD - NAB

ADEGUAMENTO CAMPO SPORTIVO "TENENTE VAUDANO"

☐ Polidivertimento di CC ☐ Polidivertimento di CC ☐ Determinazione Dispendibile

Progetto Architettonico: 06/11/2019

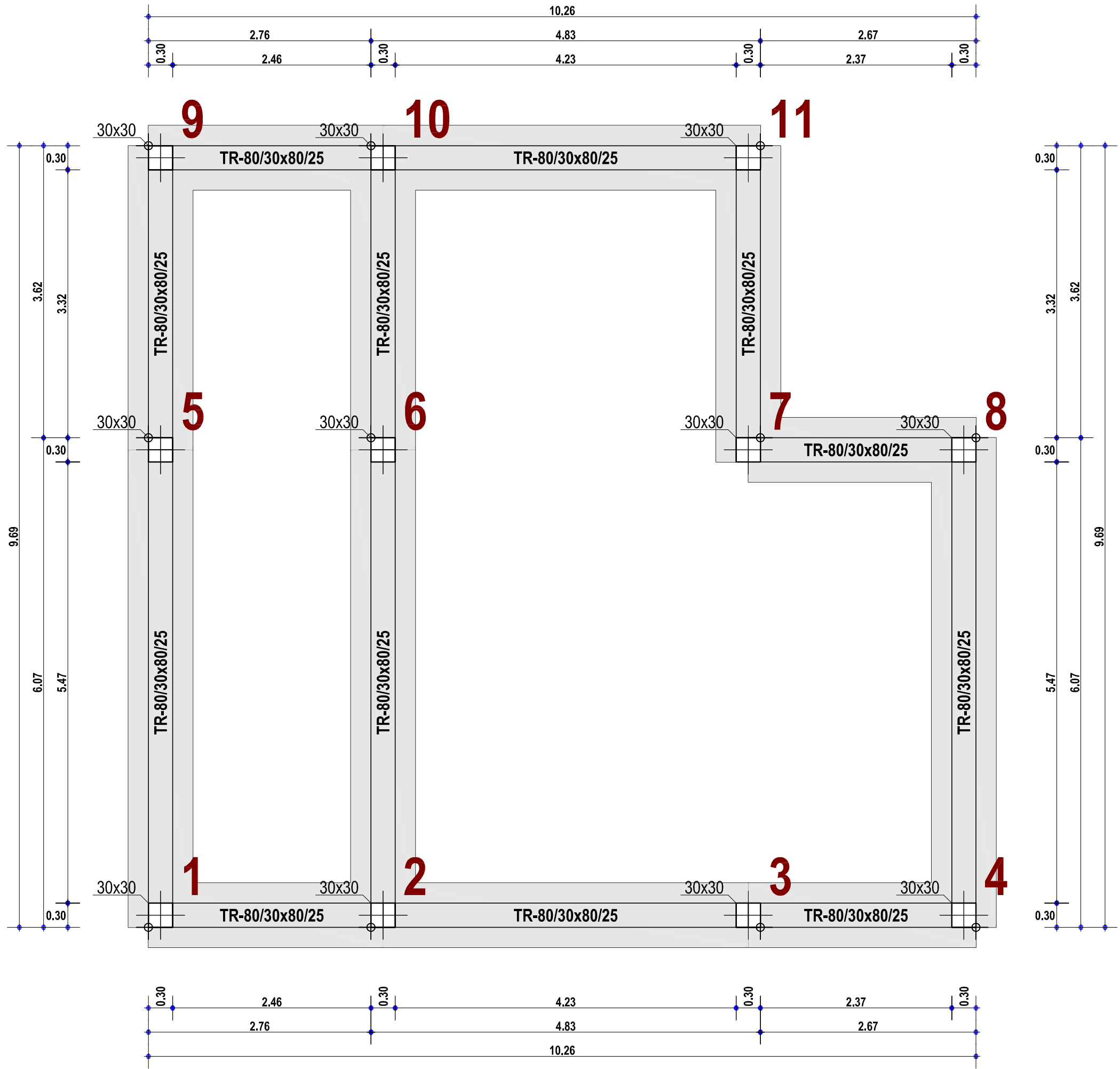
RUP: Ing. Giovanni Vito Bello
Collaboratori: Ing. Enrico Taddeo
Arch. Carlo Piccinino

Completamento	Dati della Ricerca e Analisi
Segretario Generale	Segretario Generale
Dati della Ricerca e Analisi	Dati della Ricerca e Analisi
Arch. Carlo Piccinino	Arch. Carlo Piccinino

Esecutivo travali - Bagni tifosi locali

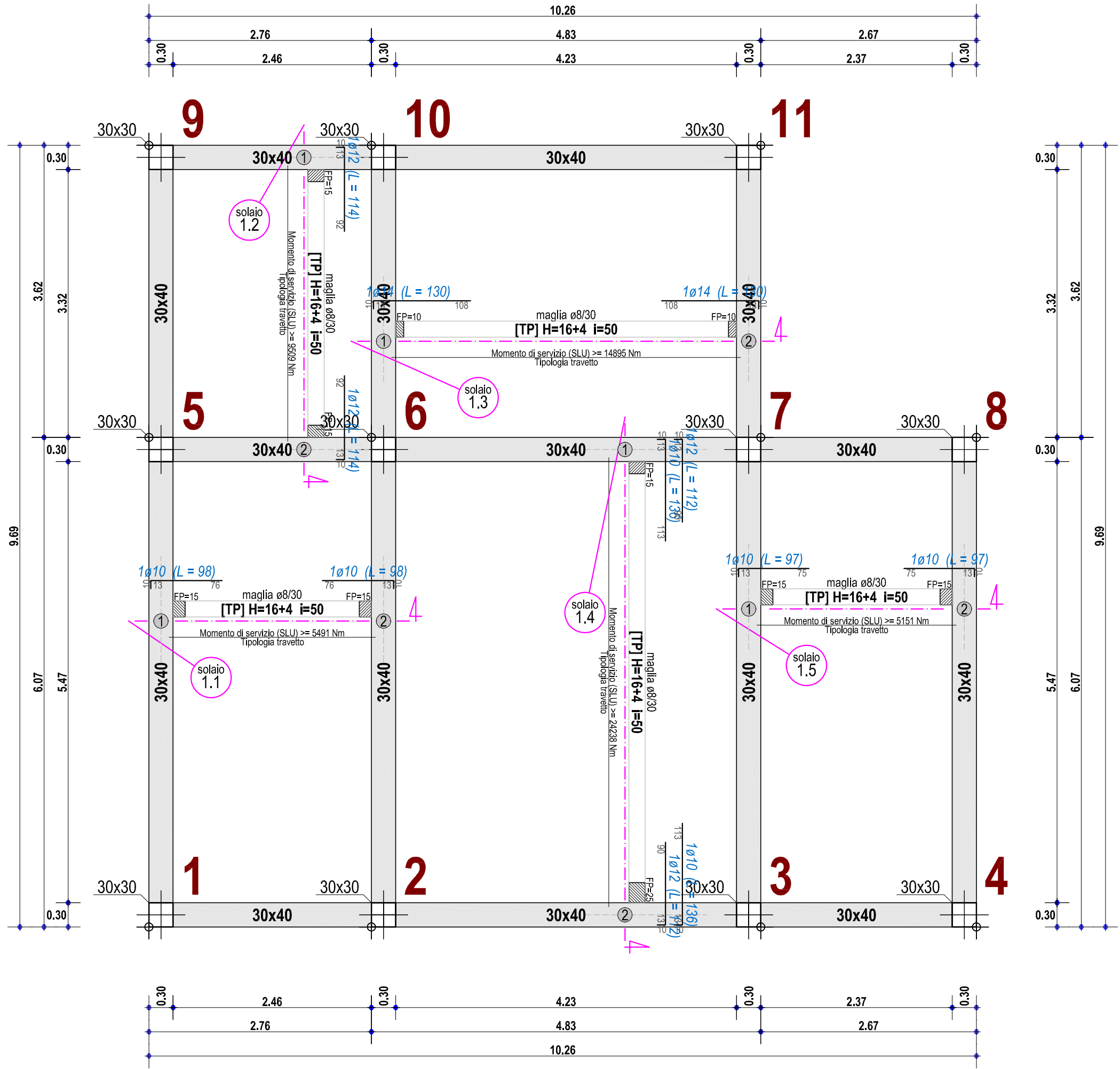
6.2.3
1:50

FONDAZIONE



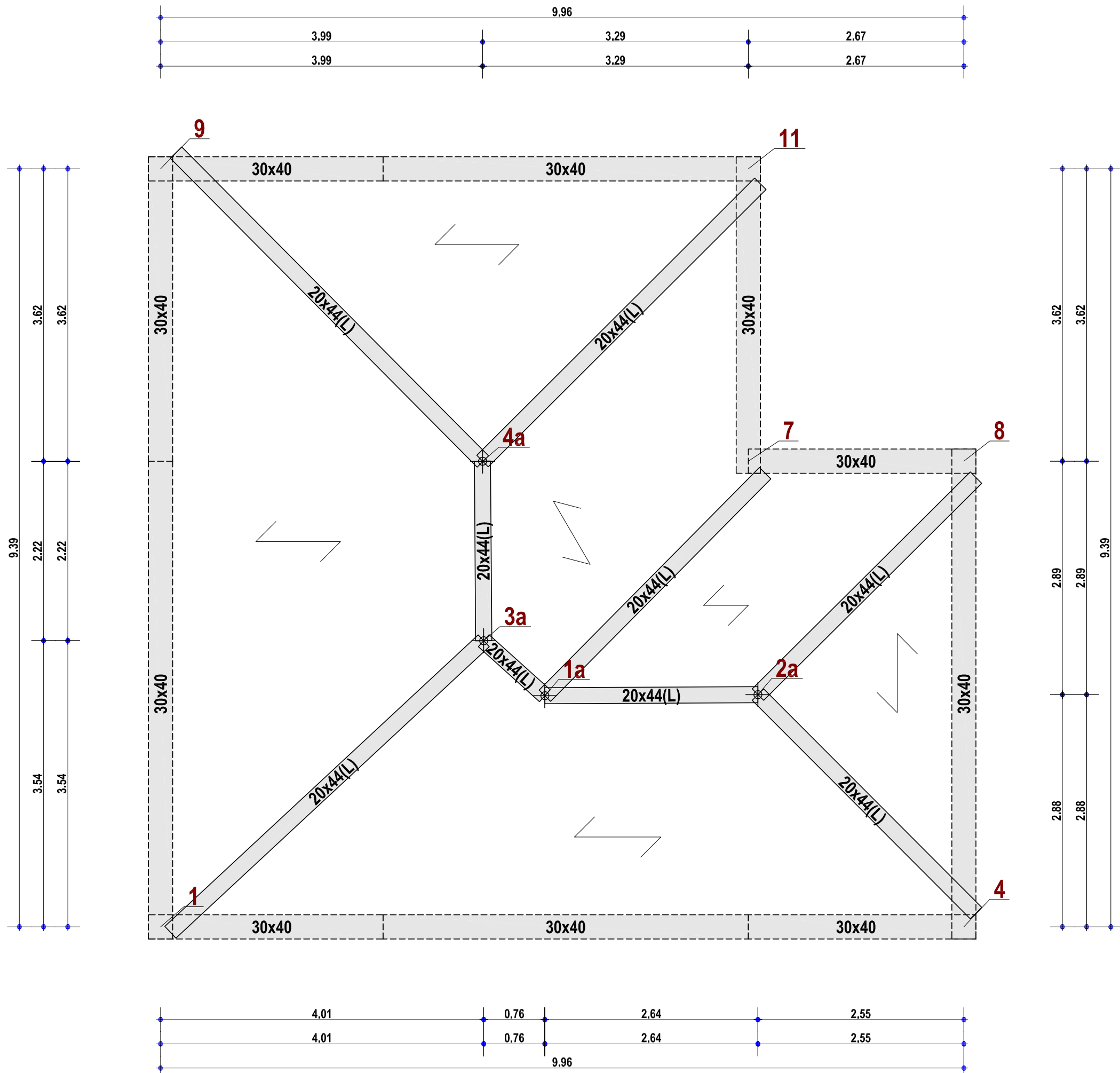
Scala: 1/50

PIANO TERRA



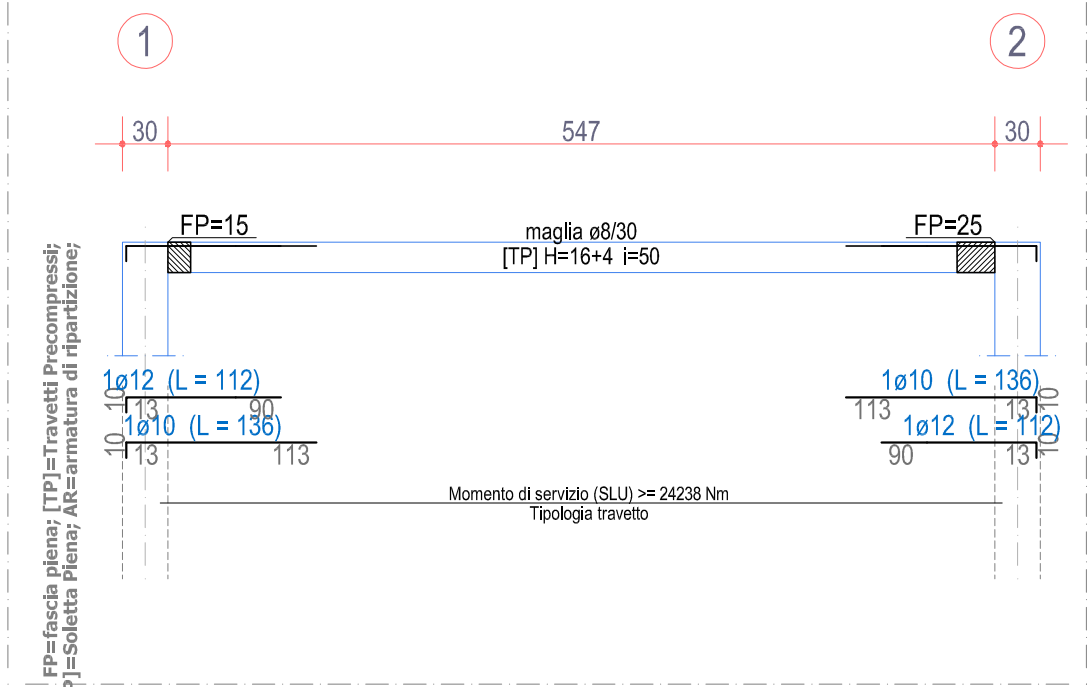
Scala: 1/50

PIANO COPERTURA



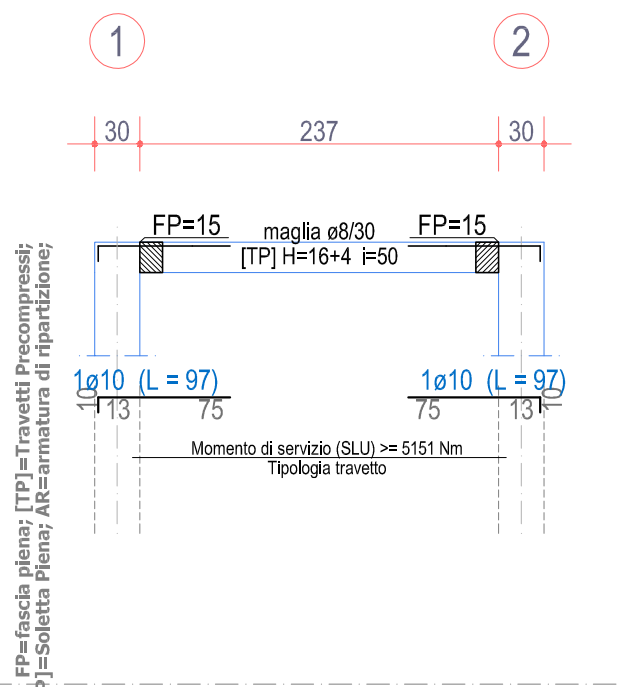
Scala: 1/50

SOLAIO 1.4



Scala: 1/50

SOLAIO 1.5



Scala: 1/50

COMUNE DI CAPACCIO PAESTUM (SA)
AREA VI
Lavori pubblici - Opere pubbliche - Servizi idrici integrati -
Programmazione strategica e finanziamenti Europei - BGAP - VAS

ADEGUAMENTO CAMPO SPORTIVO "TENENTE VAUDANO"

Progetto esecutivo approvato con
☐ Delibera di CC ☐ Delibera di GC ☐ Determinazione Dirigenziale
n. _____ del ____/____/2019



RUP: ing. Giovanni Vito BELLO
Progettista: ing. Giovanni Vito BELLO
Collaboratori: ing. Errico TADDEO
arch. Carlo PECORARO

Commissario
Dott.ssa Rosa Maria FALASCA

Segretario Generale
dott. Andrea D'AMORE

Esecutivo carpenteria - Spogliatoio arbitri

PROGETTO
SERIE
STR
NUMERO
6.3.1
RAPP.
1:50



United Nations
Educational, Scientific and
Cultural Organization

Capacito Pasitum
inscribed on the World
Heritage List in 1988

Progetto esecutivo approvato con

☐ Delibera di CC ☐ Delibera di GC ☐ Determinazione Dirigenziale

n. _____ del ____/____/2019



RUP: ing. Giovanni Vito BELLO
Progettista: ing. Giovanni Vito BELLO
Collaboratori: ing. Enrico TADDEO
 arch. Carlo PECORARO

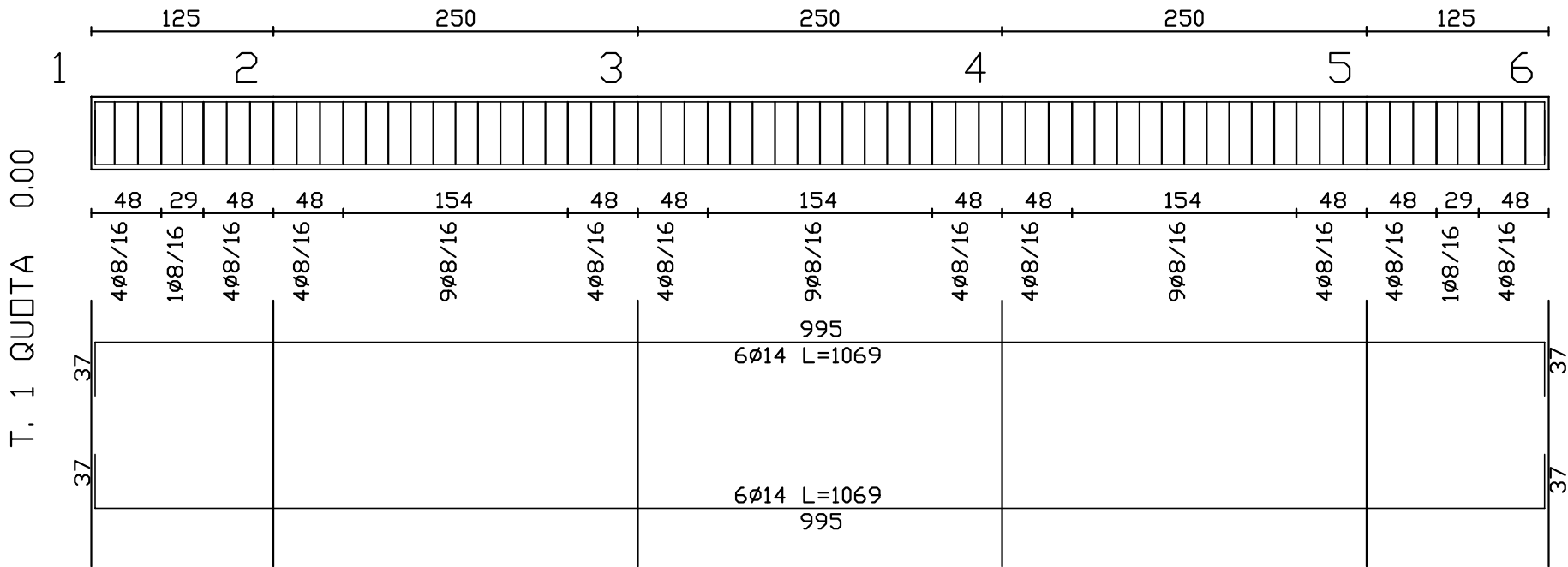
Commissario
Dott.ssa Rosa Maria FALASCA

Segretario Generale
dott. Andrea D'AMORE

1.0	VERSIONE INIZIALE	VEDI DATA DI APPROVAZIONE
VER. N°	NOTE DI VERSIONE	DATA VERSIONE

Esecutivo travi di fondazione - recinzioni

PROGETTO
--
SERIE
STR
NUMERO
6.4
RAPP.
1:20



ACCIAIO	B450C	CALCESTR. C25/30
---------	-------	------------------

