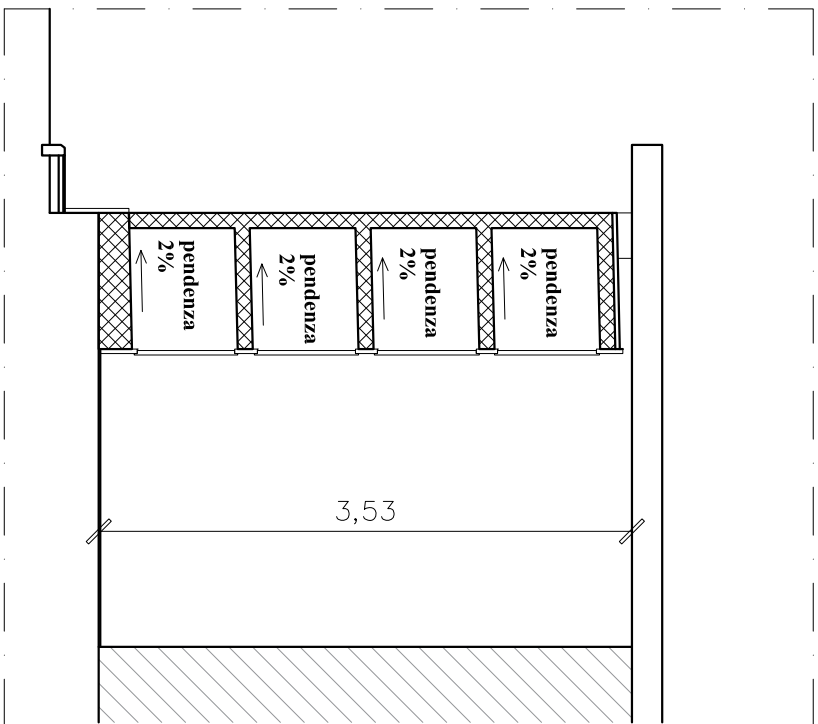
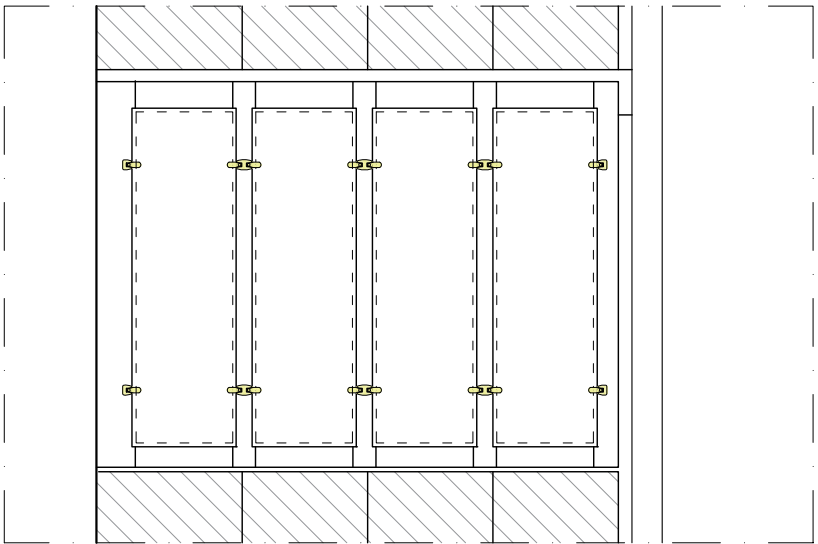


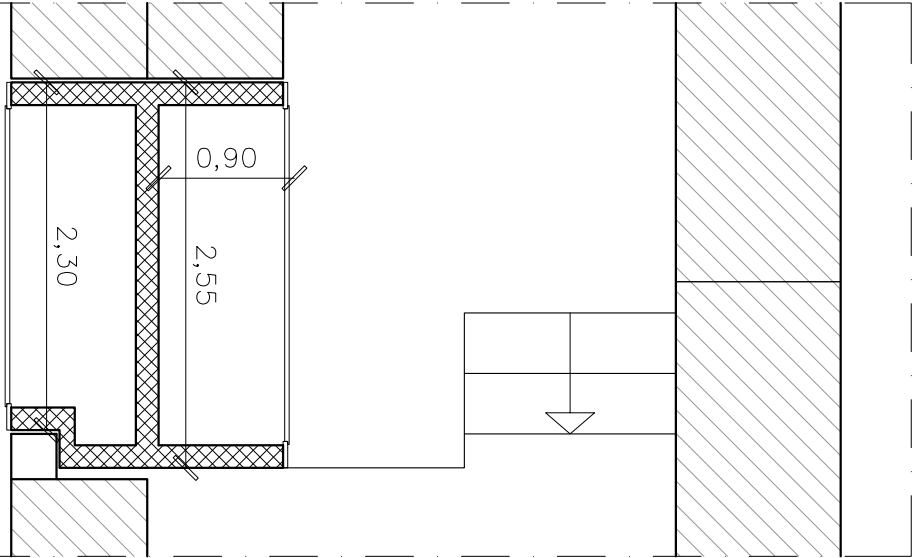
Pianta Corpo 1



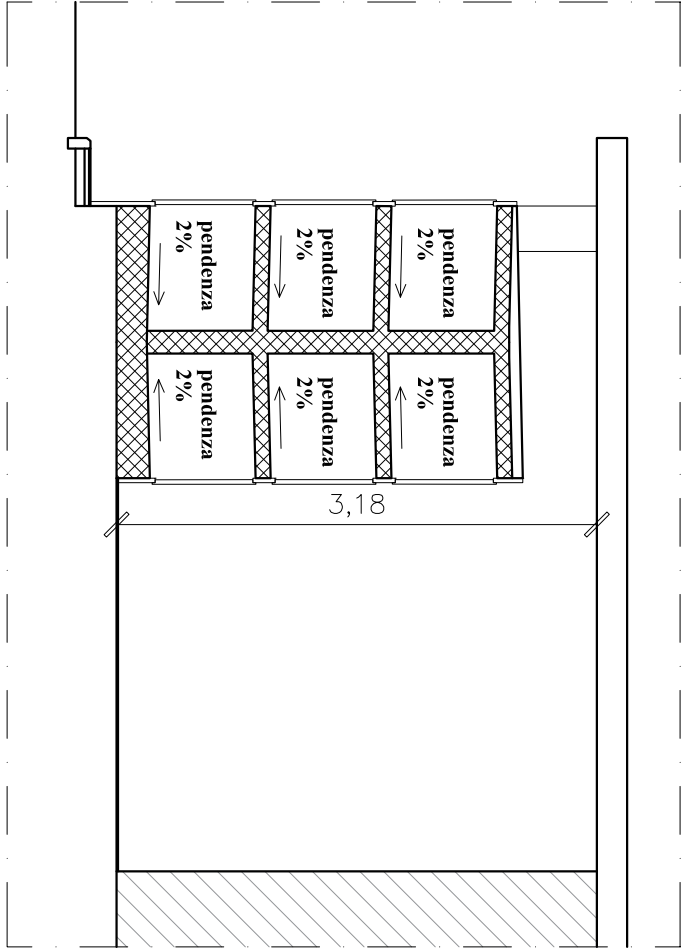
Sezione Corpo 1



Prospetto Corpo 1



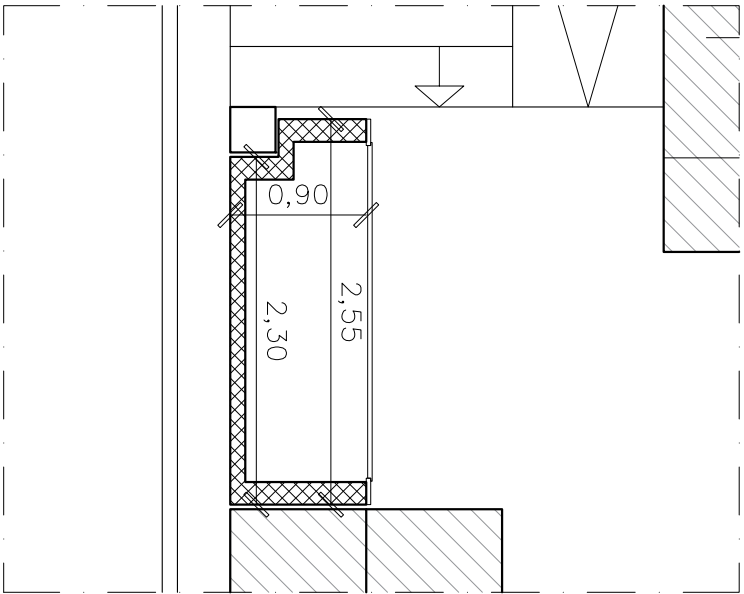
Pianta Corpo 3



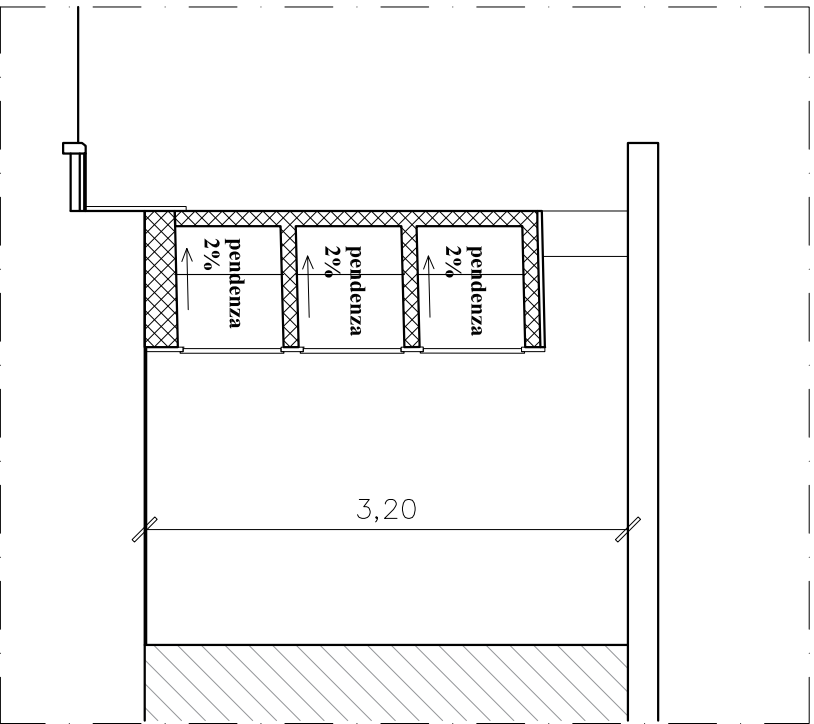
Sezione Corpo 3

LEGENDA

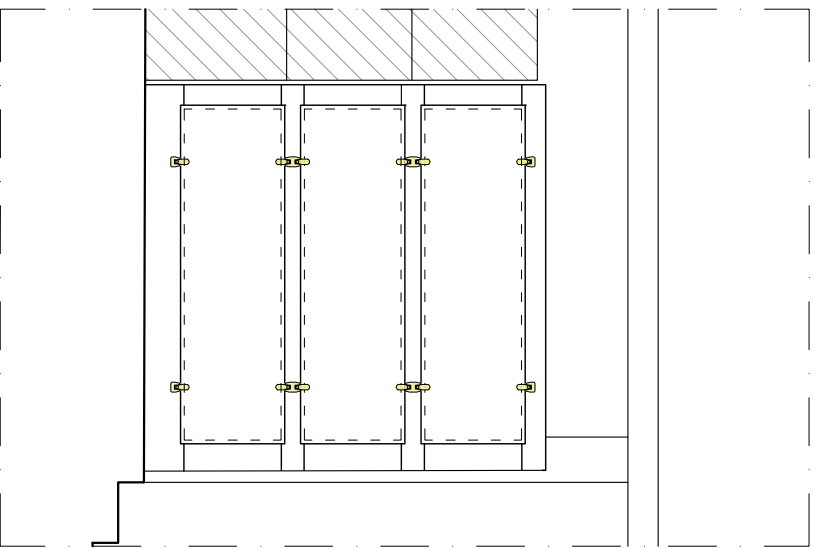
Loculi esistenti



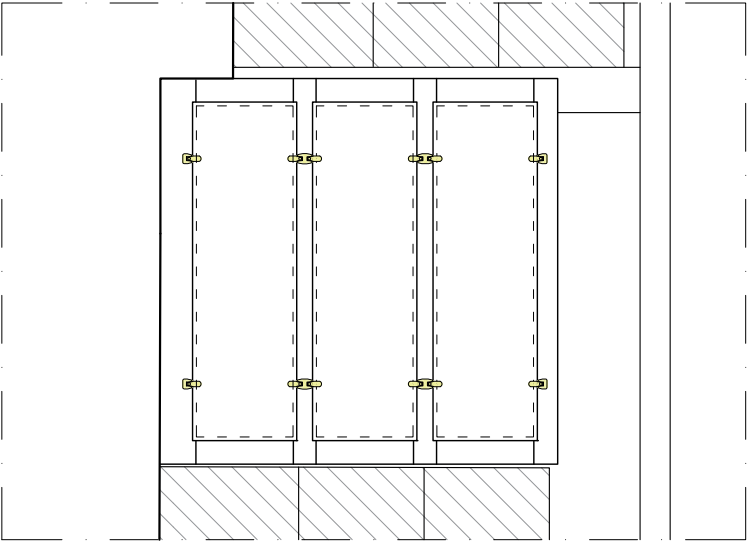
Pianta Corpo 2



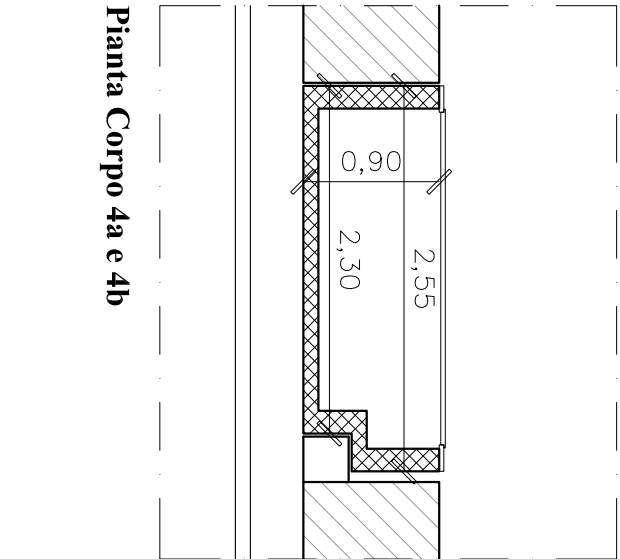
Sezione Corpo 2



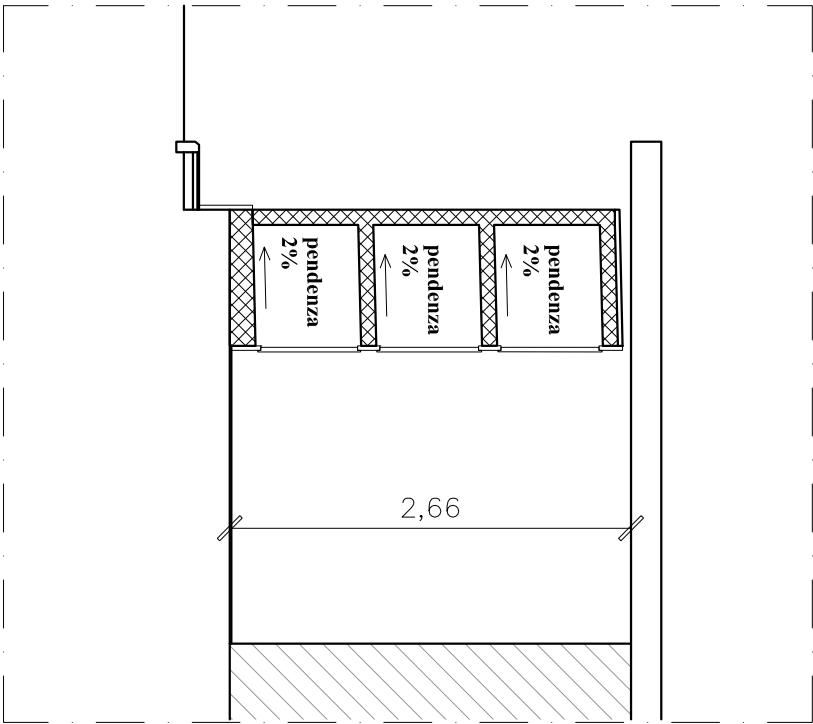
Prospetto Corpo 2



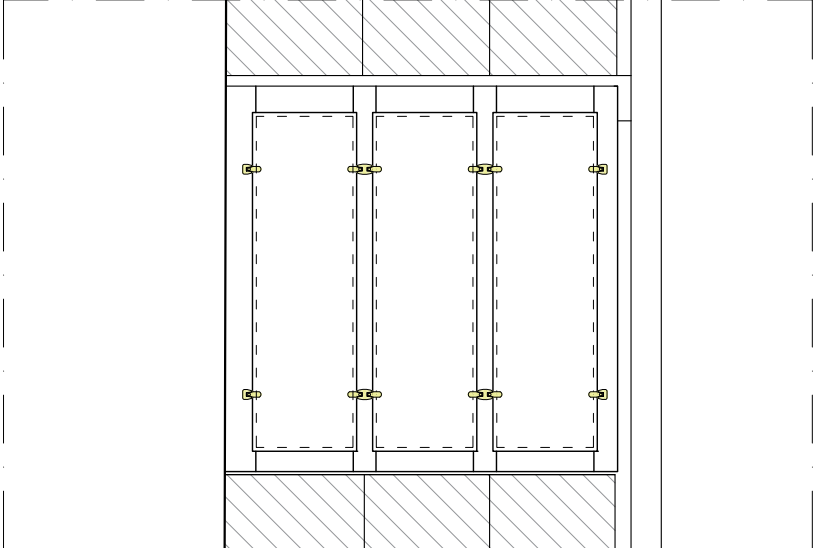
Prospetto interno Corpo 3



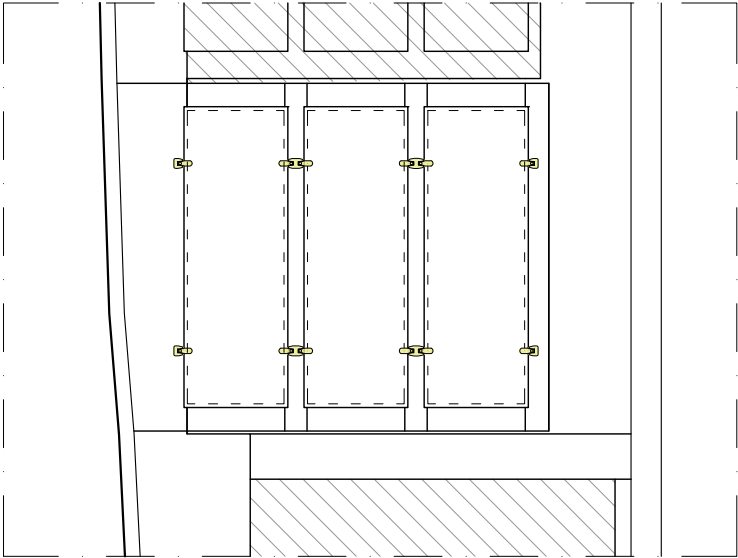
Pianta Corpo 4a e 4b



Sezione Corpo 4a e 4b



Prospetto Corpo 4a e 4b



Prospetto esterno Corpo 3



COMUNE DI CAPACCIO PAESTUM

Provincia di Salerno

CIVICO CIMITERO A CONDUZIONE COMUNALE:
REALIZZAZIONE LOCULI ED OSSARI

PROGETTO ESECUTIVO

Elaborato	Oggetto dell'elaborato		Scala
TAV. 08	PIANTE - PROSPETTI - SEZIONI		1:50
ARCH - D	BLOCCO I		
	PROGETTO		
31/08/2018		PRIMA EMISSIONE	
Data	Rev.	Descrizione	
Progettista e Direttore Lavori Ing. Lucio SCOVOTTO			RUP- Resp. Area V Ing. Carmine GRECO

COMUNE DI CAPACCIO PAESTUM

AREA V

Verificator:

Approvato:

Visior:

Progetto